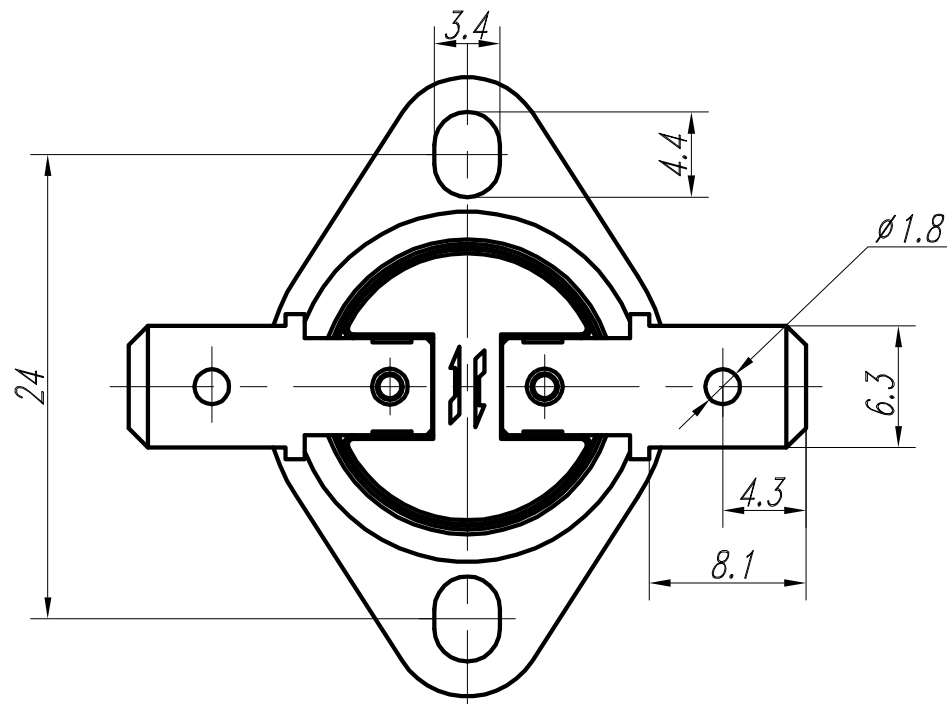
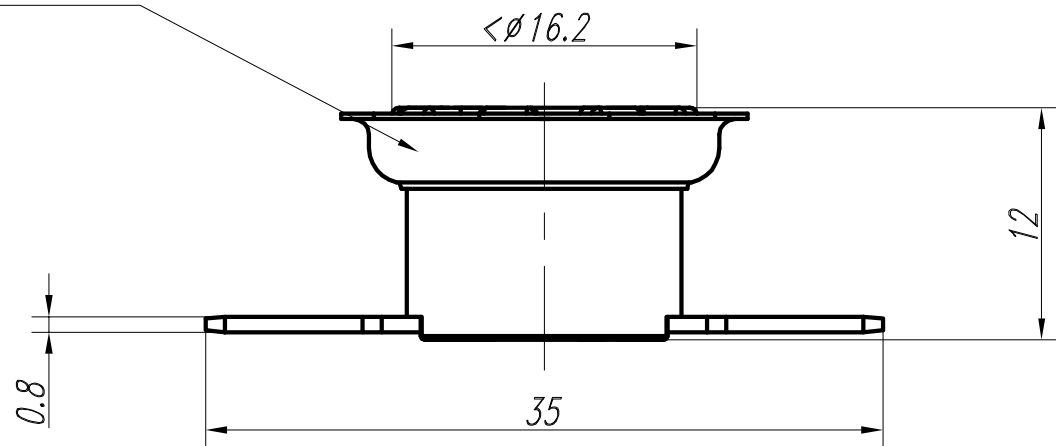


1234

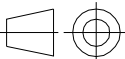



MOVEABLE BRACKET



Rated voltage	AC 250V 50Hz/60Hz	
Rated current	10A (resistive load)	
Contacts	SPST, auto-reset	
Operating temperature	OFF: (open) 120±3.5℃	ON: (close) 100±7℃
Material of base	ceramic	
Material of sensing cover	aluminum	
Material of terminal	nickel plated brass	
Insulation Resistance	More than 10MW (with DC 500V megger)	
Contact Resistance	≤50m Ω	
Max. ambient temperature	205℃	
Life(resistive load)	more than 30,000 cycles;	
Approved	UL/TUV	
Marking series no.	KSD301-G Laser marking or tool impression )	
Client's PN		

Customer should sign and stamp on this drawing before placing orders. If customer place orders without sign and stamp, we will consider customer has confirmed this drawing.

		Undeclared tolerance: 0.5mm ±	Title:  Snap-Action Thermostat	Drawing no.: <b>CS180406</b>	REV.: <b>A</b>
Unit: mm		Scale: 2.5 : 1		ERP no.:	
Size: A3					
Drawn by			Type of product or spec. of material:  <b>KSD301-12.0/10BL15S20-G</b>		
Checked by					
Date		2018-8-30			

TONGBAO-HUALONG CONTROLS CO. , LTD.