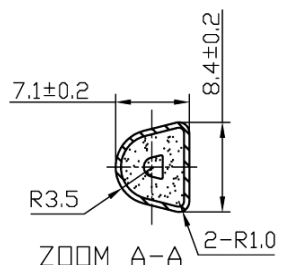
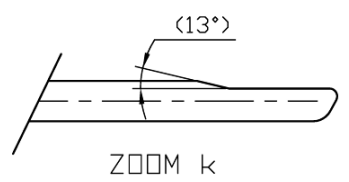
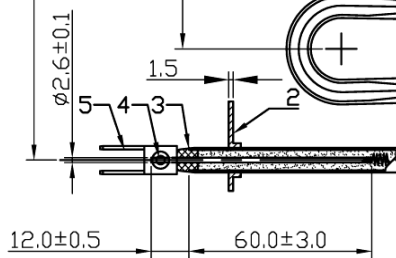


- NOTES:
1. SHEATH: AISI304 ; WALL THICKNESS: 0.5
 2. HEATING ELEMENT TO WITHSTAND 7.5 V1.0mA/AC FOR ONE SECOND WITHOUT BREAKDOWN.
 3. INSULATION RESISTANCE IN COLD CONDITION: 10M ΩMIN.
 4. LEAKAGE CURRENT TO BE 0.5mA MAX. WHILE ENERGIZED AT RATED VOLTAGE.
 5. FLATNESSES: 2.0mm MAX.
 6. PROCESS: DRY FOR STATIC AIR OPERATION
 7. ALL DIMENSIONS ARE IN MM.
 8. DEVELOPED LENGTH: 2854 mm REF
 9. MANUFACTURING DATE: X REPRESENTS MONTH
10 REPRESENTS THE YEAR 2010

TPK-SS003-2203000	220V/3000W	15. 4-16. 9	4. 3W/cm ²	0. 55 (2)	15. 3W/cm ²
-------------------	------------	-------------	-----------------------	-----------	------------------------



5			6. 35X0. 8X15. 5	
4			2. 6	
3			6. 2X2. 6X6. 5	
2			29X19X1. 5	
1		AISI304	8. 0X0. 5	
NO	DESCRIPTION	MATERIAL	DIMENSION	REMARKS

TITLE:	
TYPE:	TPK-SS0904
APPROVED:	
DATE:	06/10/2010

TOLERANCES EXCEPT AS NOTED				
LINEAR	X. ±1		SCALE:	
	X. X ±0. 5		DO NOT SCALE DRAWING	REV:
	X. XX ±0. 2		REMARKS	TPK-SS003
ANGLE	±1°	CUSTOMER DWG. NO:		
		CUSTOMER PART. NO:		