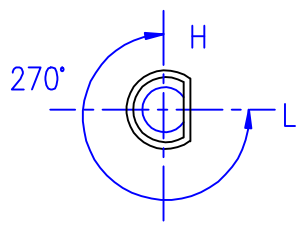
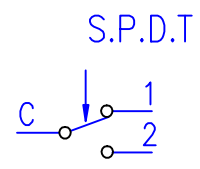


Rotating Angle



Electric Diagram:



Technical Parameter

- H/off: $85 \pm 5^\circ\text{C}$ Diff: $5.5 \pm 3.5^\circ\text{C}$
- L/off: (0°C)
- Breaking capacity
 - C-1 16(3)A 250V~
 - C-2 6(1)A 250V~
- Dielectric Strength: AC 2000V 1min
- Insulation Resistance: $>100\text{M}\Omega$
- Temperature change speed: $<1.0^\circ\text{C}/\text{min}$
- Maximum temperature:
 - Around the Switch Body $T150^\circ\text{C}$
 - Around the Sensing Bulb 115°C
- Rotating Torque of Adjustment Shaft: $<0.4\text{Nm}$
- Life of Product: $>40,000$ Cycles

REMARK:

1. The operating temperature above is at 25°C ambient temperature (temperature around the switch body), if the ambient temperature changes, the operating temperature need to be modified.
Correction factor: $C = -0.15[\text{K}/\text{K}]$
2. The scheme shows the L temperature position
3. Submerged capillary length: $50 \pm 30\text{mm}$.
4. Mounting screws must not touch thermostat body. Please use screws with proper length (5mm recommended).

SIGN	S	DRN	Liquid Expansion Type Thermostat	Customer:Satec
		CHD		Customer code:
ENG	Tongbao code: WYF85AY			
DATE	Feb.19.2019	APPR		WIRING DIAGRAM