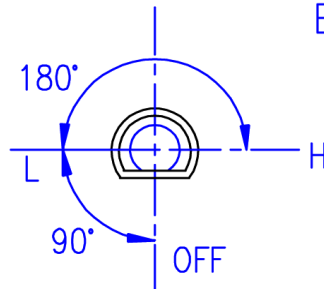
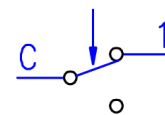


Rotating Angle



Electric Diagram:

S.P.S.T



### Technical Parameter

- H/off:  $180 \pm 9^\circ\text{C}$       Diff:  $7 \pm 5^\circ\text{C}$   
L/off:  $50 \pm 12^\circ\text{C}$
- Breaking capacity  
C-1 16(3)A 250V~
- Dielectric Strength: AC 2000V 1min
- Insulation Resistance:  $> 100\text{M}\Omega$
- Temperature change speed:
- Maximum temperature:  
Around the Switch Body  $T150^\circ\text{C}$   
Around the Sensing Bulb  $240^\circ\text{C}$
- Rotating Torque of  
Adjustment Shaft:  $< 0.4\text{N.m}$
- Life of Product:  $> 40,000$  Cycles

### REMARK:

1. The operating temperature above is at  $25^\circ\text{C}$  ambient temperature (temperature around the switch body), If the ambient temperature changes, the operating temperature needs modified.  
Correction factor:  $C = -0.39[\text{K}/\text{K}]$
2. The scheme shows the OFF temperature position
3. Mounting screws must not touch thermostat body. Please use screws with proper length (5mm recommended).
4. Submerged capillary length:  $50 \pm 30\text{mm}$ .

SIGN	S	DRN	Liquid Expansion Type Thermostat	Customer: VETRA
		CHD		Customer code:
ENG	Tongbao code: WYF180 Q			
APPR	FOSHAN TONGBAO CO., LTD.			
DATE	Nov.13.2018	WIRING DIAGRAM		