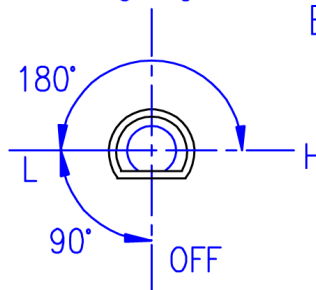
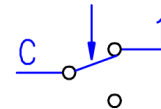


Rotating Angle



Electric Diagram:

S.P.S.T



Technical Parameter

- H/off: $180 \pm 9^\circ\text{C}$ Diff: $7 \pm 5^\circ\text{C}$
L/off: $50 \pm 12^\circ\text{C}$
- Breaking capacity
C-1 16(3)A 250V~
- Dielectric Strength: AC 2000V 1min
- Insulation Resistance: $> 100\text{M}\Omega$
- Temperature change speed:
- Maximum temperature:
Around the Switch Body $T150^\circ\text{C}$
Around the Sensing Bulb 240°C
- Rotating Torque of
Adjustment Shaft: $< 0.4\text{N}\cdot\text{m}$
- Life of Product: $> 40,000$ Cycles

REMARK:

1. The operating temperature above is at 25°C ambient temperature (temperature around the switch body), If the ambient temperature changes, the operating temperature needs modified.
Correction factor: $C = -0.47[\text{K}/\text{K}]$
2. The scheme shows the OFF temperature position
3. Mounting screws must not touch thermostat body. Please use screws with proper length (5mm recommended).
4. Submerged capillary length: $50 \pm 30\text{mm}$.

DRN		Liquid Expansion Type Thermostat	
CHD			
ENG			WYF180N
DATE	Aug.18.2017	WIRING DIAGRAM	

SIGN	S
DATE	Aug.18.2017