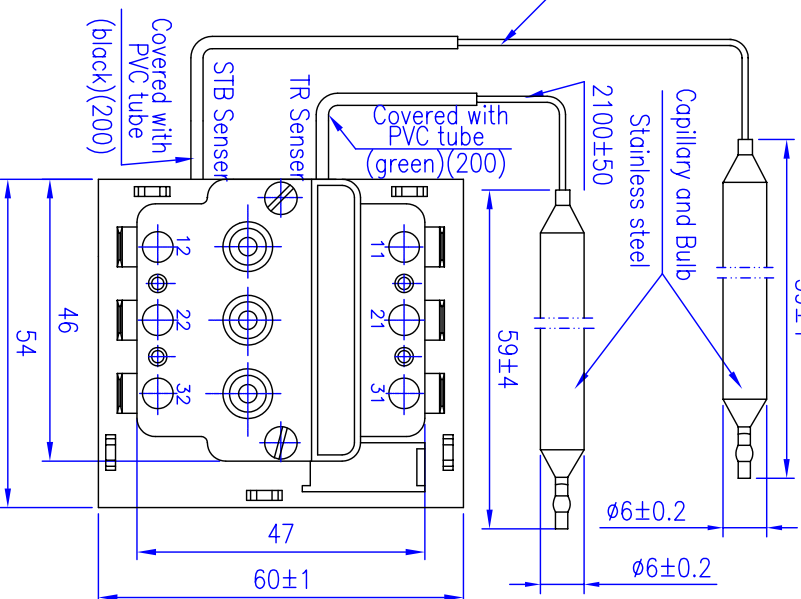
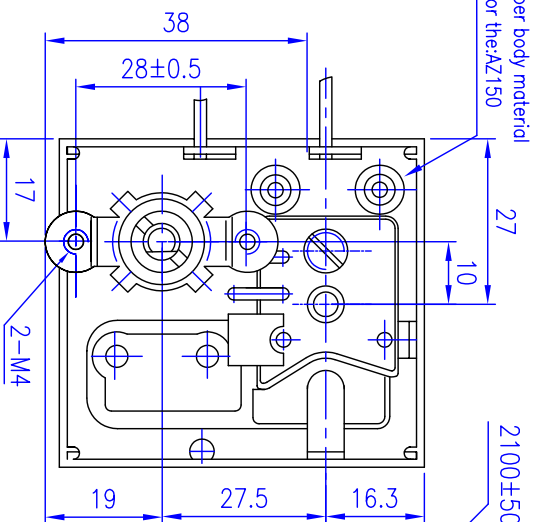
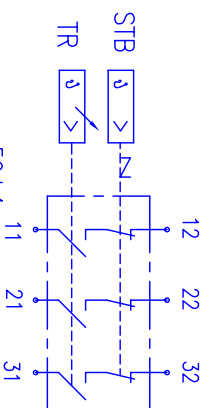
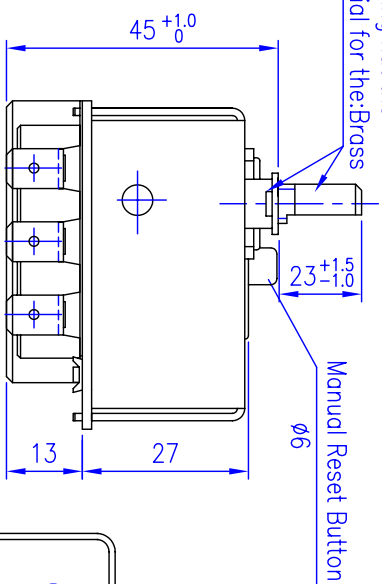


Adjusting shaft and adjusting nut the material for the:Brass

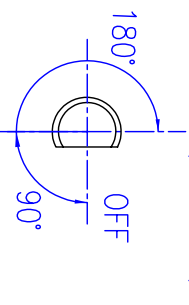
Electric diagram

Technical Parameter

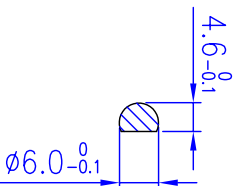


The scheme shows the OFF position

H (150±8°C)



Rotating Angle



Change content	Date
Designer	
Checked by	
Technology by	
Normalized by	
Approved by	

TR	STB	
H/OFF	150±8°C	200±12°C
DIFF	(12±5)K	
L/OFF	43±17°C	
Breaking capacity	23(3.5)A 400V~	
Minimum Current:	200mA	
Insulation Resistance:	>100M Ω	
Dielectric Strength:	AC 2000V 1min	
Temperature change speed:	<1.0°C/min	
Maximum temperature: Around the Switch Body	180°C	
Maximum temperature: Around the Sensing Bulb	-20~190°C	-20~250°C
Rotating Torque of Adjustment Shaft:	<0.4Nm	
Life of Product:	100,000 Cycles (automatical)	1000 Cycles (mechanical)
Temperature modified value	0.54	0.56(K/K)

REMARK:
 1. TR : Temperature Regulator STB : Safety Temperature Breaker
 2. The operating temperature above is at 25°C ambient temperature (temperature around the switch body), If the ambient temperature changes, the operating temperature needs modified.
 3. Submerged capillary length :50±30mm.
 4. The permitted minimum semi-diameter of spiral capillary should be more than 5mm

Liquid Expansion Type

WYC200B-001

Thermostat

Design Mark	Number	Weight(kg)	Proportion
S			1:0.8

WIRING DIAGRAM

FOSHAN TONGBAO CO.,LTD