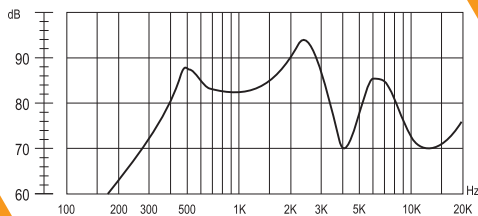
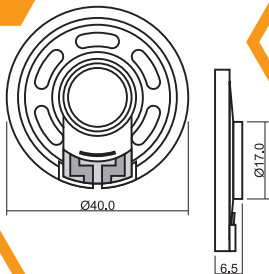


# SoniCrest SPEAKER SOUND GENERATORS

## HSB40B-8

### Dimension

Unit: mm  
Tolerance : 0.3mm



### Frequency Response

Normalized to 1W Input Power and  
1m Measuring Distance

#### ● Specification (all data taken at 25°C unless otherwise specified)

Coil Impedance (Ω)	Rated Power (W)	Maximum Input Power (W)	Resonance Frequency (Hz)	★Frequency Range (Hz)	★Sound Output at 1kHz(dB)	Operating Temp. (°C)	Storage Temp. (°C)
8 ± 15%	0.15	0.3	450 ± 20%	450 ~ 3500	82 ± 3	-10 ~ +40	-10 ~ +40

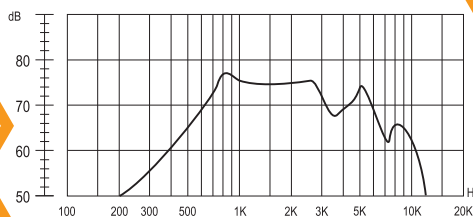
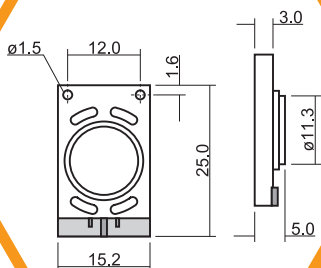
HSB40B-8

The specifications are only for 8Ω version. Specification for other impedance is available upon request.

★ Value normalized to 1W input power and 1m measuring distance.

### Dimension

Unit: mm  
Tolerance : 0.3mm



### Frequency Response

Normalized to 1W Input Power and  
1m Measuring Distance

#### ● Specification (all data taken at 25°C unless otherwise specified)

Coil Impedance (Ω)	Rated Power (W)	Maximum Input Power (W)	Resonance Frequency (Hz)	★Frequency Range (Hz)	★Sound Output at 1kHz(dB)	Operating Temp. (°C)	Storage Temp. (°C)
8 ± 15%	0.5	1	850 ± 20%	850 ~ 3000	77 ± 3	-40 ~ +55	-40 ~ +55

HSP1525A-8

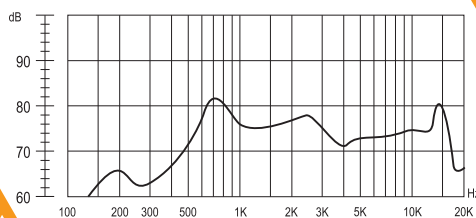
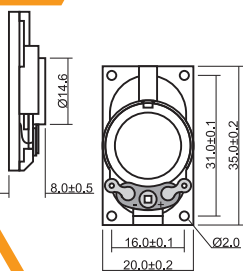
The specifications are only for 8Ω version. Specification for other impedance is available upon request.

★ Value normalized to 1W input power and 1m measuring distance.

## HSP2035A-8

### Dimension

Unit: mm  
Tolerance : 0.3mm



### Frequency Response

Normalized to 1W Input Power and  
1m Measuring Distance

#### ● Specification (all data taken at 25°C unless otherwise specified)

Coil Impedance (Ω)	Rated Power (W)	Maximum Input Power (W)	Resonance Frequency (Hz)	★Frequency Range (Hz)	★Sound Output at 1kHz(dB)	Operating Temp. (°C)	Storage Temp. (°C)
8 ± 15%	1	2	600 ± 20%	600 ~ 5000	75 ± 3	-10 ~ +40	-10 ~ +40

HSP2035A-8

The specifications are only for 8Ω version. Specification for other impedance is available upon request.

★ Value normalized to 1W input power and 1m measuring distance.