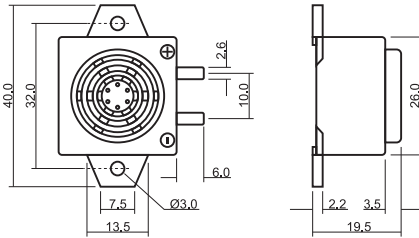
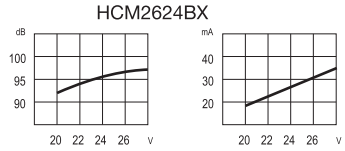
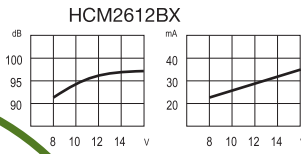
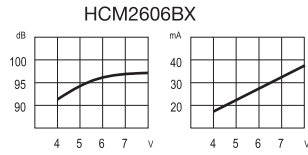
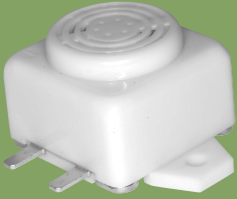


# SoniCrest Electro-Magnetic Sound Generators

## HCM26BX Series



### Dimension

Unit: mm  
Tolerance : 0.3mm

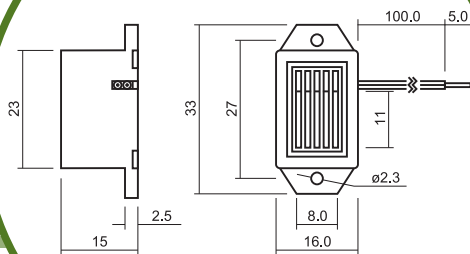
### Characteristics Response

Measuring Temperature : 25°C  
Measuring Distance : 10cm

### Specification (all data taken at 25°C unless otherwise specified)

| Model     | Rated Voltage (V) | Operating Voltage (V) | ★Rated Current (mA) | ★Sound Output at 10cm (dB) | ★Generated Frequency (Hz) | Operating Temperature (°C) | Storage Temperature (°C) | Weight (g) |
|-----------|-------------------|-----------------------|---------------------|----------------------------|---------------------------|----------------------------|--------------------------|------------|
| HCM2606BX | 6                 | 4 ~ 8                 | ≤35                 | ≥95                        | 300 ~ 500                 | -40 ~ +70                  | -40 ~ +80                | 17         |
| HCM2612BX | 12                | 8 ~ 16                | ≤35                 | ≥95                        | 300 ~ 500                 | -40 ~ +70                  | -40 ~ +80                | 17         |
| HCM2624BX | 24                | 20 ~ 28               | ≤35                 | ≥95                        | 300 ~ 500                 | -40 ~ +70                  | -40 ~ +80                | 17         |

★ Value Applying Rated Voltage,DC



### Dimension

Unit: mm  
Tolerance : 0.3mm

## HCE23A Series



### Specification (all data taken at 25°C unless otherwise specified)

| Model    | Rated Voltage (V) | Operating Voltage (V) | ★Rated Current (mA) | ★Sound Output at 10cm (dB) | ★Generated Frequency (Hz) | Tone   | Housing Material | Terminal | Weight (g) |
|----------|-------------------|-----------------------|---------------------|----------------------------|---------------------------|--------|------------------|----------|------------|
| HCE2303A | 3                 | 2 ~ 4                 | ≤15                 | ≥75                        | 300 ~ 800                 | Single | ABS              | Pin/Wine | 10         |
| HCE2306A | 6                 | 3 ~ 7                 | ≤20                 | ≥75                        | 300 ~ 800                 | Single | ABS              | Pin/Wine | 10         |
| HCE2309A | 9                 | 6 ~ 11                | ≤15                 | ≥75                        | 300 ~ 800                 | Single | ABS              | Pin/Wine | 10         |
| HCE2312A | 12                | 7 ~ 17                | ≤15                 | ≥75                        | 300 ~ 800                 | Single | ABS              | Pin/Wine | 10         |
| HCE2324A | 24                | 16 ~ 30               | ≤20                 | ≥75                        | 300 ~ 800                 | Single | ABS              | Pin/Wine | 10         |

★ Value Applying Rated Voltage,DC