

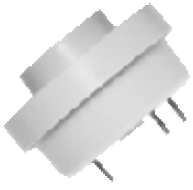
Series	Model	Diameter (Ømm)	Height (mm)	Rated Voltage (VDC)	Tone Nature	Min. Sound Output	Frequency (Hz)	Terminal *	Page No.
DB-E1418	141S5120	12.0	8.5	12.0	Single	95 AT 30cm	5000	P	43
DB-E328	32S4120	14.0	7.5	12.0	Single	80 AT 10cm	4000	P	37
SL13	SL13S4050	15.4	13.9	5.0	Single	83 AT 10cm	4000	P	45
SL13	SL13S4120	15.4	13.9	12.0	Single	85 AT 10cm	4000	P	45
DB-E218	21S5120	22.0	10.8	12.0	Single	85 AT 30cm	4500	L	34
DB-E248	24S3090	22.5	12.0	9.0	Single	85 AT 30cm	3300	L	34
DB-E248	24S5120	22.5	12.0	12.0	Single	90 AT 30cm	5200	L	34
DB-E268	26S4120	23.0	9.8	12.0	Single	85 AT 30cm	3500	P	35
DB-E948	94S4120	23.0	9.8	12.0	Single	85 AT 30cm	3500	L	39
DB-E268	26S4240	23.0	9.8	24.0	Single	85 AT 30cm	3500	P	35
DB-E238	23S3120AN	23.0	16.0	12.0	Single	85 AT 30cm	2900	P	34
DB-E1528	151S3120	23.0	17.0	12.0	Single	90 AT 30cm	3700	L	44
SL11	SL11S3120	23.0	19.0	12.0	Single	90 AT 30cm	3300	L & P	45
SL11	SL11S3240	23.0	19.0	24.0	Single	90 AT 30cm	3400	L & P	45
SL11	SL11S31100	23.0	19.0	110 (VAC)	Single	75 AT 30cm	3300	L & P	44
SL11	SL11S32200	23.0	19.0	220 (VAC)	Single	75 AT 30cm	3300	L & P	44
DB-E1168	116S3120X	23.5	9.5	12.0	Single	85 AT 10cm	3400	P	40
DB-E1168	116S3120	23.5	9.5	12.0	Single	93 AT 30cm	3400	P	40
DB-E1708	170S3120	26.3	21.7	9.0 / 12.0	Single	95/60CM (9V) 102/60CM (12V)	2800	P	46
DB-E78	7S4120	29.5	24.5	12.0	Single	95 AT 30cm	3500	L	32
DB-E78	7P3120	29.5	24.5	12.0	Pulse	90 AT 30cm	3200	L	32
DB-E78	7D3120	29.5	24.5	12.0	Dual	95 / 90 AT 30cm	3200	L	32
DB-E78	7S4240	29.5	24.5	24.0	Single	95 AT 30cm	3500	L	32
DB-E898	89S4030	30.0	19.5	3.0	Single	90 AT 30cm	3500	P	38
DB-E898	89S4120	30.0	19.5	12.0	Single	90 AT 30cm	3500	P	39
DB-E278	27S3120	30.2	14.7	12.0	Single	90 AT 30cm	2700	P	35
DB-E1428	142S3120	31.2	5.1	12.0	Single	75 AT 30cm	3000	P	44
DB-E858	85S4120	32.0	14.0	12.0	Single	87 AT 30cm	3900	L	38
DB-E1218	121S3120	36.5	22.0	12.0	Single	85 AT 1m	3000	PG	40
DB-E1218	121PF3120	36.5	22.0	12.0	Pulse	85 AT 1m	3000	PG	40
DB-E1218	121DF3120	36.5	26.0	12.0	Single/Pulse	85 AT 1m	3000	PG	41
DB-E1118	111S3060	40.0	20.0	6.0	Single	100 AT 30cm	3200	P	40
DB-E298	29SL3120	41.8	16.0	12.0	Single	96 AT 30cm	2800	L	36
DB-E298	29PN3120	41.8	16.0	12.0	Pulse	90 AT 30cm	2900	L	36
DB-E298	29PF3120	41.8	16.0	12.0	Fast Pulse	90 AT 30cm	2900	L	36
DB-E998	99R3090	42.0	18.0	9.0	Siren	100 AT 30cm	2500	L	39
DB-E108	10S3240	42.0	20.5	24.0	Single	85 AT 30cm	2900	PT	32
DB-E288	28SL3120	43.0	14.0	12.0	Single	100 AT 30cm	2800	P	35
SL12	SL12AS3120	43.0	33.0	12.0	Single	80 AT 30cm	2900	PG	45
SL12	SL12APF3120	43.0	33.0	12.0	Fast Pulse	80 AT 30cm	2900	PG	45
SL12	SL12APN3120	43.0	33.0	12.0	Slow Pulse	80 AT 30cm	2900	PG	45
SL12	SL12ADF3120	43.0	33.0	12.0	Single / Fast Pulse	80 AT 30cm	2900	PG	45
SL12	SL12ADN3120	43.0	33.0	12.0	Single / Slow Pulse	80 AT 30cm	2900	PG	45
SL12	SL12BS3120	43.0	33.0	12.0	Single	80 AT 30cm	2900	PT	45

* L - Leadwire, P - PIN, PT - Plate, PG - Plug

Series	Model	Diameter (Ømm)	Height (mm)	Rated Voltage (VDC)	Tone Nature	Min. Sound Output	Frequency (Hz)	Terminal *	Page No
SL12	SL12BPF3120	43.0	33.0	12.0	Fast Pulse	80 AT 30cm	2900	PT	45
SL12	SL12BPN3120	43.0	33.0	12.0	Slow Pulse	80 AT 30cm	2900	PT	45
SL12	SL12BDF3120	43.0	33.0	12.0	Single/Fast Pulse	80 AT 30cm	2900	PT	45
SL12	SL12BDN3120	43.0	33.0	12.0	Single/ Slow Pulse	80 AT 30cm	2900	PT	45
DB-E118	11S3120	43.5	34.5	12.0	Single	100 AT 30cm	2900	PT	33
DB-E118	11PN3120	43.5	34.5	12.0	Pulse	90 AT 30cm	2900	PT	33
DB-E118	11PF3120	43.5	34.5	12.0	Fast Pulse	90 AT 30cm	2900	PT	33
DB-E118	11D3120	43.5	34.5	12.0	Dual	95 / 90 AT 30cm	2900	PT	33
DB-E118	11S3240	43.5	34.5	24.0	Single	95 AT 30cm	2900	PT	33
DB-E118	11PN3240	43.5	34.5	24.0	Pulse	80 AT 30cm	2900	PT	33
DB-E118	11PF3240	43.5	34.5	24.0	Fast Pulse	80 AT 30cm	2900	PT	33
DB-E118	11D3240	43.5	34.5	24.0	Dual	85 / 80 AT 30cm	2900	PT	33
DB-E38	3S3120	45.0	26	12.0	Single	105 AT 30cm	2900	L & P	32
DB-E38	3P3120	45.0	26	12.0	Pulse	100 AT 30cm	2900	L & P	32
DB-E38	3D3120	45.0	26	12.0	Dual	105 / 100 AT 30cm	2900	L & P	32
DB-E38	3S3240	45.0	26	24.0	Single	100 AT 30cm	2900	L & P	32
DB-E308	30S3120	50.0	29.0	12.0	Single	108 AT 25.4cm	2500	PT	36
DB-E628	62T3120	50.0	38.0	12.0	Two	105 AT 30cm	3000 ~ 3200	L	37
DB-E738	73R2120	52.0	50.0	12.0	Siren	105 AT 1m	1500 ~ 4000	L	38
DB-E738	73R2240	52.0	50.0	24.0	Siren	100 AT 1m	1500 ~ 4000	L	38
DB-E1228	122S3060	53.0	31.0	6.0	Single	93 AT 30cm	2800	L	41
DB-E1308	130T3120	59.4	41.5	12.0	Two	105 AT 1m	2800	L	41
DB-E1438	143S3120	60.0	38.0	12.0	Single	95 AT 100cm	2800	L	44
DB-E1358	135R2120	62.4	56.0	12.0	Siren	115 AT 1m	2300	L	42
DB-E1408	140R1120	80.0	102.0	12.0	Siren	112 AT 1m	1500	L	44
DB-E718	71R1120	89.0	105.0	12.0	Siren	110 AT 50cm	600 ~ 6000	L	37
DB-E1378	137R1120	91.0	115.0	12.0	Siren	112 AT 1m	1500~6000	L	43
DB-E318	31S5120	23.4 x 32.0	6.5	12.0	Single	85 AT 30cm	5800	P	36
DB-E318	31S3120	23.4 x 32.0	6.5	12.0	Single	80 AT 30cm	3500	P	36
DB-E1328	132S3120	25.9 X 25.9	25.9	12.0	Single	88 AT 30cm	3300	PT	42
SL15	SL15R3240	40.0X 45.5	57.5	24.0	Siren	100 AT 30cm	1000 ~ 3500	L	46
SL15	SL15R3120	40.0X 45.5	57.5	12.0	Siren	105 AT 30cm	1500 ~ 3500	L	46
DB-E188	18T3240	55.0 x 85.0	32.5	24.0	Two	105 AT 1m	2600 ~ 2800	L	33
DB-E188	18R3240	55.0 x 85.0	32.5	24.0	Siren	105 AT 1m	1500 ~ 3100	L	33
DB-E188	18T3120	55.0 x 85.0	32.5	12.0	Two	105 AT 1m	2600 ~ 2800	L	33
DB-E188	18R3120	55.0 x 85.0	32.5	12.0	Siren	105 AT 1m	1500 ~ 3100	L	33
DB-E1368	136R4120	55.0 x 85.0	31.5	12.0	Siren	105 AT 1m	3200~4200	L	42
DB-E1388	138R1120	72.0 x 79.0	97.0	12.0	Siren	108 AT 1m	1500	L	43
DB-E198	19T3240	85.0 x 105.5	44.5	24.0	Two	102 AT 3m	2600 ~ 2800	L	33
DB-E198	19R3240	85.0 x 105.5	44.5	24.0	Siren	97 AT 3m	1500 ~ 3100	L	33
DB-E198	19T3120	85.0 x 105.5	44.5	12.0	Two	102 AT 3m	2600 ~ 2800	L	33
DB-E198	19R3120	85.0 x 105.5	44.5	12.0	Siren	97 AT 3m	1500 ~ 3100	L	33

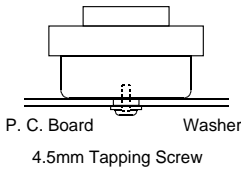
* L - Leadwire, P - PIN, PT - Plate, PG - Plug

DB-E38



COLOUR	HOUSING	TERMINAL
WHITE	FLAME RETARDANT ABS	PIN / LEADWIRE

SUGGESTED METHOD OF MOUNTING



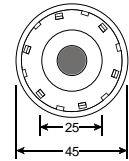
ELECTRICAL SPECIFICATIONS

Model No.	3S3120	3S3240	3P3120	3D3120
Operating Voltage (VDC)	1 ~ 13	3 ~ 28	1 ~ 13	1 ~ 13
Rated Voltage (VDC)	12	24	12	12
* Max. Rated Current (mA.)	35	20	20	35/20
* Min Sound Output (dBA/30cm)	105	100	100	105/100
* Frequency (Hz.)	2900±500	2900±500	2900±500	2900±500
Tone Nature	single	single	pulse	dual
Operating Temperature (°C)	-20 ~ +60	-20 ~ +60	-20 ~ +60	-20 ~ +60
Weight (gm.)	28	28	28	28

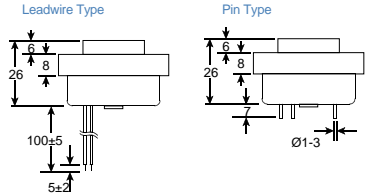
Value applying at rated voltage
Pulse Rate at rated voltage is 2 ~ 7Hz.

DIMENSION

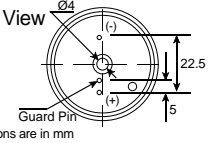
Top View



Side View



Bottom View



DB-E78



COLOUR	HOUSING	TERMINAL
BLACK	ABS	LEADWIRE

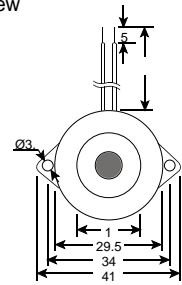
ELECTRICAL SPECIFICATIONS

Model No.	7S4120	7S4240	7P3120	7D3120
Operating Voltage (VDC)	1.5 ~ 16	1.5 ~ 28	3 ~ 15	3 ~ 15
Rated Voltage (VDC)	12	24	12	12
* Max. Rated Current (mA.)	15	20	10	20
* Min Sound Output (dBA/30cm)	95	95	90	95/90
* Frequency (Hz.)	3500±500		3200±500	
Tone Nature	single	single	pulse	dual
Operating Temperature (°C)	-20 ~ +60	-20 ~ +60	-20 ~ +60	-20 ~ +60
Weight (gm.)	15	15	15	15

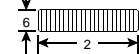
Value applying at rated voltage
Pulse Rate at rated voltage is 2 ~ 7Hz.

DIMENSION

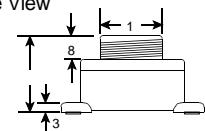
Top View



Nut



Side View

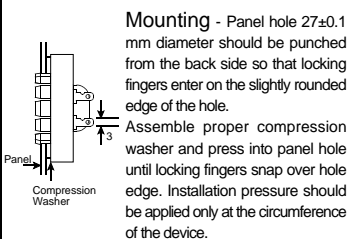


DB-E108



COLOUR	HOUSING	TERMINAL
BLACK	NYLON	PLATE

TYPICAL PANEL INSTALLATION



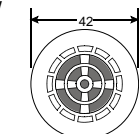
ELECTRICAL SPECIFICATIONS

Model No.	10S3240
Operating Voltage (VDC)	1 ~ 28
Rated Voltage (VDC)	24
* Max. Rated Current (mA.)	15
* Min Sound Output (dBA/30cm)	85
* Frequency (Hz.)	2900±500
Tone Nature	single
Operating Temperature (°C)	-20 ~ +60
Weight (gm.)	18

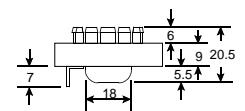
* Value applying at rated voltage

DIMENSION

Top View

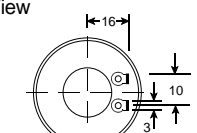


Side View



This portion snap-locks into panels 0.8 to 3.2 mm thick using appropriate compression washer 27mm dia. panel hole required.

Bottom View



DB-E118

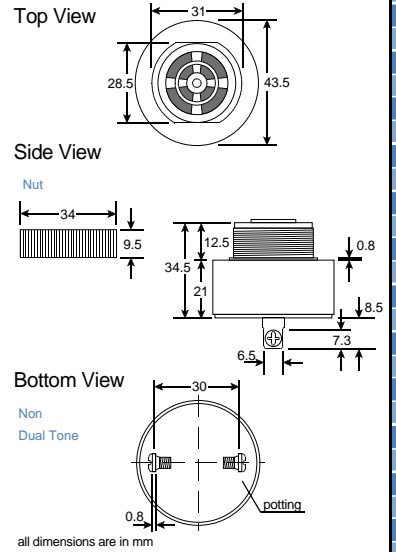


COLOUR	HOUSING	TERMINAL
BLACK	ABS	PLATE

ELECTRICAL SPECIFICATIONS

Model No.	11S3120	11PN3120	11PF3120	11D3120	11S3240	11PN3240	11PF3240	11D3240
Operating Voltage (VDC)	1 ~ 16	4 ~ 16	4 ~ 16	4 ~ 16	1 ~ 28	4 ~ 28	4 ~ 28	4 ~ 28
Rated Voltage (VDC)	12	12	12	12	24	14	24	24
* Max. Rated Current (mA.)	30	20	20	25/20	15	22	22	30/20
* Min Sound Output (dBA/30m)	100	90	90	95/90	95	80	80	85/80
* Frequency (Hz.)	2900 ± 500							
Tone Nature	single	normal pulse	fast pulse			normal pulse	fast pulse	dual
Operating Temperature (°C)	-20 ~ +60							
Weight (gm.)	35							
Value applying at rated voltage								
The Pulse Rate at rated voltage: Normal pulse : 0.8 ~ 1.2 Hz : Fast pulse : 4 ~ 6 Hz								

DIMENSION



DB-E188

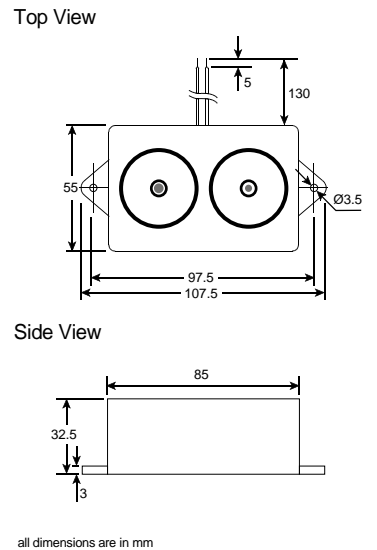


COLOUR	HOUSING	TERMINAL
IVORY	ABS	LEADWIRE

ELECTRICAL SPECIFICATIONS

Model No.	18T3120	18T3240	18R3120	18R3240
Operating Voltage (VDC)	6 ~ 15	16 ~ 28	9 ~ 15	16 ~ 28
Rated Voltage (VDC)	12	24	12	24
* Max. Rated Current (mA.)	120	120	120	120
* Min Sound Output (dBA/100cm)	105	105	105	105
* Frequency (Hz.)	(2600 ~ 3100) ± 500		1500 - 3100	
Tone Nature	two	two	siren	siren
Operating Temperature (°C)	-20 ~ +60	-20 ~ +60	-20 ~ +60	-20 ~ +60
Weight (gm.)	90	90	90	90
* Value applying at rated voltage				

DIMENSION



DB-E198

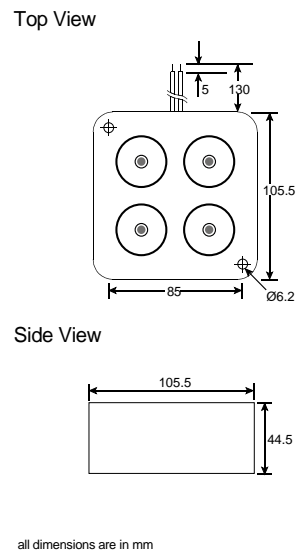


COLOUR	HOUSING	TERMINAL
IVORY	ABS	LEADWIRE

ELECTRICAL SPECIFICATIONS

Model No.	19T3120	19T3240	19R3120	19R3240
Operating Voltage (VDC)	6 ~ 15	16 ~ 28	6 ~ 15	16 ~ 28
Rated Voltage (VDC)	12	24	12	24
* Max. Rated Current (mA.)	190	190	190	190
* Min Sound Output (dBA/300cm)	102	102	97	97
* Frequency (Hz.)	(2600 ~ 2800) ± 500		1500 - 3100	
Tone Nature	two	two	siren	siren
Operating Temperature (°C)	-20 ~ +60	-20 ~ +60	-20 ~ +60	-20 ~ +60
Weight (gm.)	190	190	190	190
* Value applying at rated voltage				

DIMENSION



DB-E218



COLOUR	HOUSING	TERMINAL
BLACK	ABS	LEADWIRE

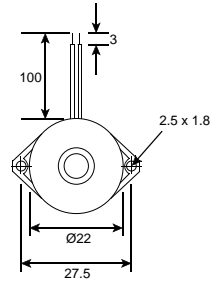
ELECTRICAL SPECIFICATIONS

Model No.	21S5120	
Operating Voltage (VDC)	3 ~ 30	
Rated Voltage (VDC)	12	
* Max. Rated Current (mA.)	3	
* Min Sound Output (dBA/30cm)	85	
* Frequency (Hz.)	4500±500	
Tone Nature	single	
Operating Temperature (°C)	-20 ~ +60	
Weight (gm.)	5	

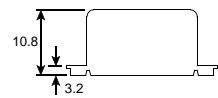
* Value applying at rated voltage

DIMENSION

Top View



Side View



all dimensions are in mm

DB-E238



COLOUR	HOUSING	TERMINAL
BLACK	NORYL SE1	PIN

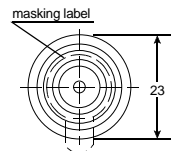
ELECTRICAL SPECIFICATIONS

Model No.	23S3120AN	
Operating Voltage (VDC)	3 ~ 20	
Rated Voltage (VDC)	12	
* Max. Rated Current (mA.)	8	
* Min Sound Output (dBA/30cm)	85	
* Frequency (Hz.)	2900±500	
Tone Nature	single	
Operating Temperature (°C)	-20 ~ +85	
Weight (gm.)	6	

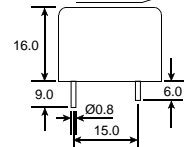
* Value applying at rated voltage

DIMENSION

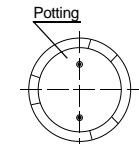
Top View



Side View



Bottom View



all dimensions are in mm

DB-E248



COLOUR	HOUSING	TERMINAL
BLACK	ABS	LEADWIRE

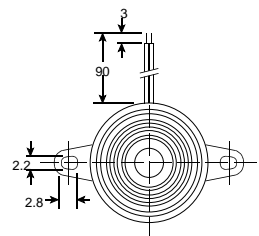
ELECTRICAL SPECIFICATIONS

Model No.	24S3090	24S5120
Operating Voltage (VDC)	1.5 ~ 24	1.5 ~ 24
Rated Voltage (VDC)	9	12
* Max. Rated Current (mA.)	20	20
* Min Sound Output (dBA/30cm)	85	90
* Frequency (Hz.)	3300±500	5200±500
Tone Nature	single	single
Operating Temperature (°C)	-20 ~ +70	-20 ~ +70
Weight (gm.)	14	14

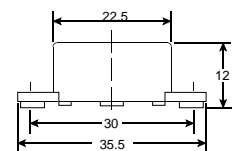
* Value applying at rated voltage

DIMENSION

Top View



Side View



all dimensions are in mm

DB-E268



COLOUR	HOUSING	TERMINAL
BLACK	PBT	PIN

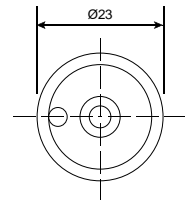
ELECTRICAL SPECIFICATIONS

Model No.	26S4120	26S4240
Operating Voltage (VDC)	8 ~ 18	12 ~ 36
Rated Voltage (VDC)	12	24
* Max. Rated Current (mA)	10	10
* Min Sound Output (dBA/30cm)	85	85
* Frequency (Hz.)	3500±500	3500±500
Tone Nature	single	single
Operating Temperature (°C)	-20 ~ +60	-20 ~ +60
Weight (gm.)	4	4

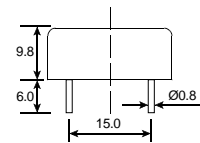
* Value applying at rated voltage

DIMENSION

Top View



Side View



all dimensions are in mm

DB-E278



COLOUR	HOUSING	TERMINAL
BLACK	ABS	PIN

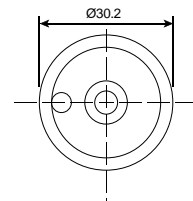
ELECTRICAL SPECIFICATIONS

Model No.	27S3120
Operating Voltage (VDC)	3 ~ 20
Rated Voltage (VDC)	12
* Max. Rated Current (mA)	10
* Min Sound Output (dBA/30cm)	90
* Frequency (Hz.)	2700±500
Tone Nature	single
Operating Temperature (°C)	-20 ~ +60
Weight (gm.)	11

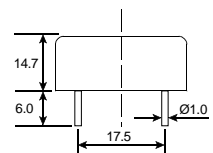
* Value applying at rated voltage

DIMENSION

Top View



Side View



all dimensions are in mm

DB-E288



COLOUR	HOUSING	TERMINAL
BLACK	ABS	PIN

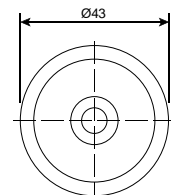
ELECTRICAL SPECIFICATIONS

Model No.	28SL3120
Operating Voltage (VDC)	3 ~ 20
Rated Voltage (VDC)	12
* Max. Rated Current (mA)	12
* Min Sound Output (dBA/30cm)	100
* Frequency (Hz.)	2800±500
Tone Nature	single
Operating Temperature (°C)	-20 ~ +60
Weight (gm.)	11

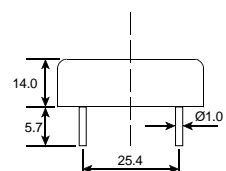
* Value applying at rated voltage

DIMENSION

Top View



Side View



all dimensions are in mm

DB-E298



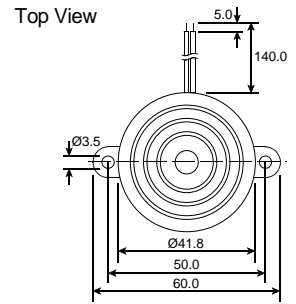
COLOUR	HOUSING	TERMINAL
BLACK	ABS	LEADWIRE

ELECTRICAL SPECIFICATIONS

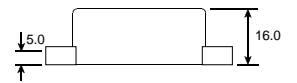
Model No.	29SL3120	29PN3120	29PF3120
Operating Voltage (VDC)	1.5 ~ 20	3 ~ 28	3 ~ 28
Rated Voltage (VDC)	12	12	12
* Max. Rated Current (mA.)	10	9	9
* Min Sound Output (dBA/30cm)	96	90	90
* Frequency (Hz.)	2800±500	2900±500	2900±500
Tone Nature	single	slow pulse	fast pulse
Operating Temperature (°C)	-20 ~ +60	-20 ~ +60	-20 ~ +60
Weight (gm.)	12	15	15

* Value applying at rated voltage
The Pulse Rate at rated voltage is 2 ~ 7Hz.

DIMENSION



Side View



all dimensions are in mm

DB-E308



COLOUR	HOUSING	TERMINAL
BLACK	ABS	PLATE

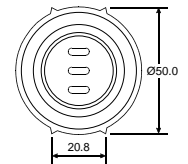
ELECTRICAL SPECIFICATIONS

Model No.	30S3120
Operating Voltage (VDC)	5 ~ 13
Rated Voltage (VDC)	12
* Max. Rated Current (mA.)	75
* Min Sound Output (dBA/25.4cm)	108
* Frequency (Hz.)	2500±500
Tone Nature	single
Operating Temperature (°C)	-20 ~ +60
Weight (gm.)	40

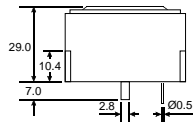
* Value applying at rated voltage

DIMENSION

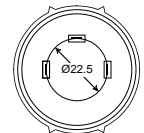
Top View



Side View



Bottom View



all dimensions are in mm

DB-E318



COLOUR	HOUSING	TERMINAL
IVORY	ABS	PIN

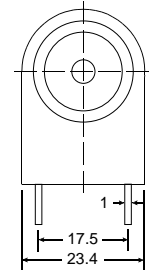
ELECTRICAL SPECIFICATIONS

Model No.	31S3120	31S5120
Operating Voltage (VDC)	3 ~ 24	3 ~ 24
Rated Voltage (VDC)	12	12
* Min. Sound Output (dBA/10cm)	80	85
* Max. Rated Current (mA.)	6	8
* Frequency (Hz.)	3500±500	5800±500
Tone Nature	single	single
Operating Temperature (°C)	-20 ~ +60	-20 ~ +60
Weight (gm.)	8	8

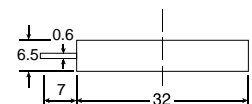
* Value applying at rated voltage

DIMENSION

Top View

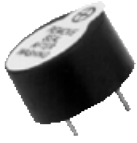


Side View



all dimensions are in mm

DB-E328

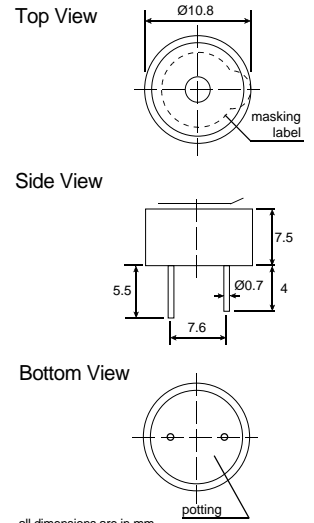


COLOUR	HOUSING	TERMINAL
BLACK	NORYL GFN2	PIN

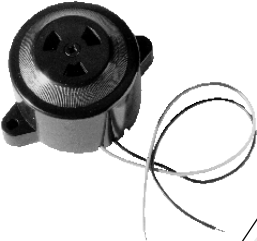
ELECTRICAL SPECIFICATIONS

Model No.	32S4120
Operating Voltage (VDC)	3 - 16
Rated Voltage (VDC)	12
* Max. Rated Current (mA.)	7
* Min Sound Output (dBA/10cm)	80
* Frequency (Hz.)	4000±500
Tone Nature	single
Operating Temperature (°C)	-20 ~ +60
Weight (gm.)	1
* Value applying at rated voltage	

DIMENSION



DB-E628

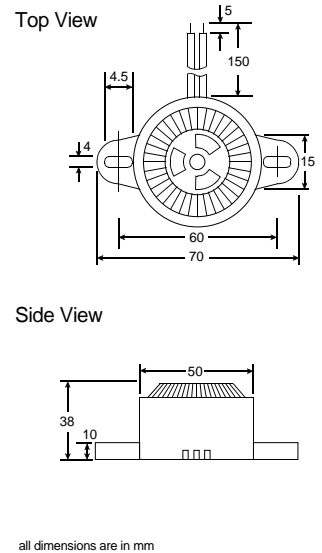


COLOUR	HOUSING	TERMINAL
BLACK	ABS	LEADWIRE

ELECTRICAL SPECIFICATIONS

Model No.	62T3120
Operating Voltage (VDC)	6 - 16
Rated Voltage (VDC)	12
* Max. Rated Current (mA.)	65
* Min Sound Output (dBA/30cm)	105
* Frequency (Hz.)	(3000 ~ 3200)±500
Tone Nature	two
Operating Temperature (°C)	-20 ~ +60
Weight (gm.)	45
* Value applying at rated voltage	

DIMENSION



DB-E718

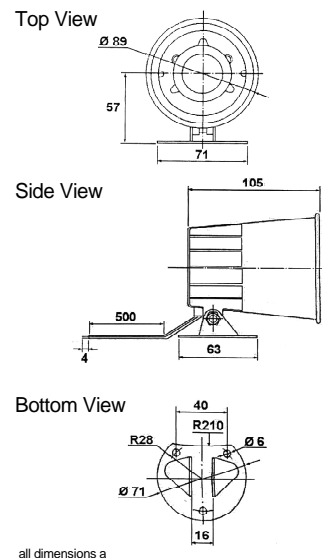


COLOUR	HOUSING	TERMINAL
BLACK	PBT	LEADWIRE

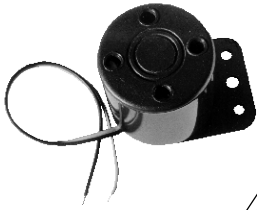
ELECTRICAL SPECIFICATIONS

Model No.	71R1120
Operating Voltage (VDC)	6 - 15
Rated Voltage (VDC)	12
* Max. Rated Current (A)	100
* Min Sound Output (dBA/100cm)	110
* Frequency (Hz.)	600 ~ 6000
Tone Nature	siren
Operating Temperature (°C)	-20 ~ +60
Weight (kg)	370
* Value applying at rated voltage	

DIMENSION



DB-E738



COLOUR	HOUSING	TERMINAL
BLACK	ABS	LEADWIRE

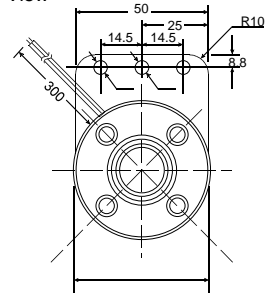
ELECTRICAL SPECIFICATIONS

Model No.	73R2120	73R2240
Operating Voltage (VDC)	6 ~ 15	18 ~ 26
Rated Voltage (VDC)	12	24
*Sound Pressure Level (dBA/100cm)	105	100
*Frequency (Hz.)	1500 ~ 4000	1500 ~ 4000
*Current (mA.)	280	105
Tone Nature	siren	siren
Operating Temperature (°C)	-20 ~ +60	-20 ~ +60
Weight (gm.)	80	80

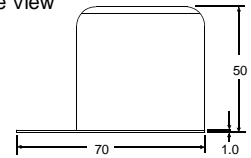
* Value applying at rated voltage

DIMENSION

Top View



Side View



all dimensions are in mm

DB-E858



COLOUR	HOUSING	TERMINAL
WHITE	ABS	LEADWIRE

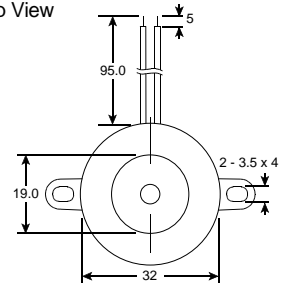
ELECTRICAL SPECIFICATIONS

Model No.	85S4120
Operating Voltage (Hz.)	3 ~ 28
Rated Voltage (VDC)	12
* Min. Sound Output (dBA/30cm)	87
* Frequency (Hz.)	3900±500
* Max. Rated Current (mA.)	15
Tone Nature	single
Operating Temperature (°C)	-20 ~ +60
Weight (gm.)	8

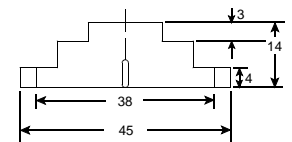
* Value applying at rated voltage

DIMENSION

Top View



Side View



all dimensions are in mm

DB-E898



COLOUR	HOUSING	TERMINAL
BLACK	PBT	PIN

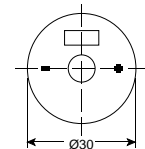
ELECTRICAL SPECIFICATIONS

Model No.	89S4030	89S4120
Operating Voltage (VDC)	2 ~ 5	3 ~ 20
Rated Voltage (VDC)	3	12
* Max. Rated Current (mA.)	9	10
* Min Sound Output (dBA/30cm)	90	90
* Frequency (Hz.)	3500±500	3500±500
Tone Nature	single	single
Operating Temperature (°C)	-25 ~ +60	-20 ~ +60
Weight (gm.)	10	10

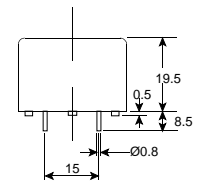
* Value applying at rated voltage

DIMENSION

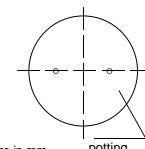
Top View



Side View



Bottom View



all dimensions are in mm

potting

DB-E948



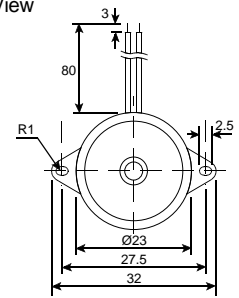
COLOUR	HOUSING	TERMINAL
BLACK	ABS	LEADWIRE

ELECTRICAL SPECIFICATIONS

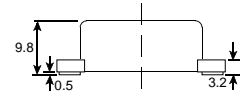
Model No.	94S4120	
Operating Voltage (VDC)	3 ~ 28	
Rated Voltage (VDC)	12	
* Max. Rated Current (mA.)	10	
* Min Sound Output (dBA/30cm)	85	
* Frequency (Hz.)	3500 ± 500	
Tone Nature	single	
Operating Temperature (°C)	-25 ~ +65	
Weight (gm.)	3.5	
* Value applying at rated voltage The Pulse Rating is 2-7Hz at Rated Voltage.		

DIMENSION

Top View



Side View



all dimensions are in mm

DB-E998



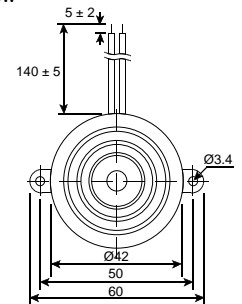
COLOUR	HOUSING	TERMINAL
BLACK	ABS	LEADWIRE

ELECTRICAL SPECIFICATIONS

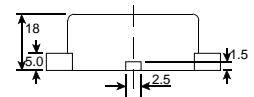
Model No.	99R3090	
Operating Voltage (VDC)	6 ~ 12	
Rated Voltage (VDC)	9	
* Max. Rated Current (mA.)	150	
* Min Sound Output (dBA/30cm)	100	
* Frequency (Hz.)	1500 ~ 3500	
Tone Nature	siren	
Operating Temperature (°C)	-20 ~ +60	
Weight (gm.)	23	
* Value applying at rated voltage		

DIMENSION

Top View



Side View



all dimensions are in mm

DB-E1118



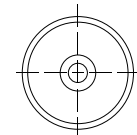
COLOUR	HOUSING	TERMINAL
BLACK	ABS	PIN

ELECTRICAL SPECIFICATIONS

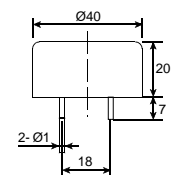
Model No.	111S3060	
Operating Voltage (VDC)	5 ~ 9	
Rated Voltage (VDC)	6	
* Max. Rated Current (mA.)	30	
* Min Sound Output (dBA/30cm)	100	
* Frequency (Hz.)	3200±500	
Tone Nature	single	
Operating Temperature (°C)	-20 ~ +60	
Weight (gm.)	8	
* Value applying at rated voltage		

DIMENSION

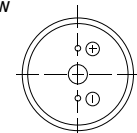
Top View



Side View



Bottom View



all dimensions are in mm

DB-E1168



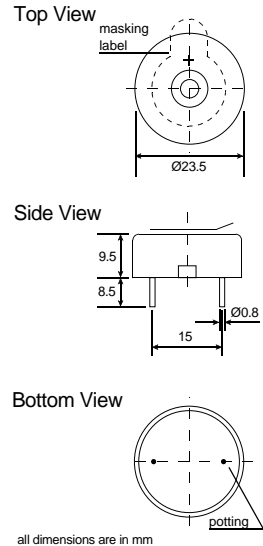
COLOUR	HOUSING	TERMINAL
BLACK	NORYL	PIN

ELECTRICAL SPECIFICATIONS

Model No.	116S3120X	116S3120
Operating Voltage (VDC)	3 ~ 20	3 ~ 20
Rated Voltage (VDC)	12	12
* Max. Rated Current (mA)	8	15
* Min Sound Output (dBA / 10cm)	90dBA / 10cm	93dBA / 30cm
* Frequency (Hz.)	3400±500	3400±500
Tone Nature	single	single
Operating Temperature (°C)	-20 ~ +60	-20 ~ +60
Weight (gm.)	4	4

* Value applying at rated voltage

DIMENSION



DB-E1218



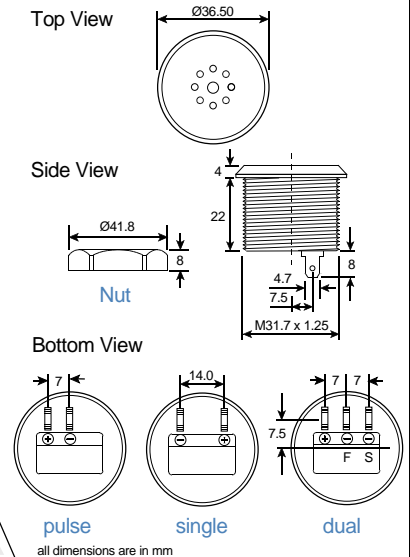
COLOUR	HOUSING	TERMINAL
BLACK	ABS	PLUG

ELECTRICAL SPECIFICATIONS

Model No.	121S3120	121PF3120	121DF3120
Operating Voltage (VDC)	5 ~ 28	5 ~ 28	5 ~ 28
Rated Voltage (VDC)	12	12	12
* Max. Rated Current (mR.)	18	18	18
* Min Sound Output (dBA/1m)	85	85	85
* Frequency (Hz.)	3000±500	3000±500	3000±500
Tone Nature	single	pulse	single/pulse
Operating Temperature (°C)	-20 ~ +60	-20 ~ +60	-20 ~ +60
Weight (gm.)	35	35	35

* Value applying at rated voltage

DIMENSION



DB-E1228



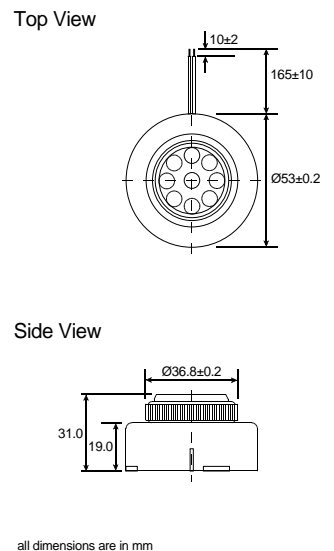
COLOUR	HOUSING	TERMINAL
GREY	NORYL SE1	LEADWIRE

ELECTRICAL SPECIFICATIONS

Model No.	122S3060
Operating Voltage (VDC)	3 ~ 12
Rated Voltage (VDC)	6
* Max. Rated Current (mA)	20
* Min Sound Output (dBA/30cm)	93
* Frequency (Hz.)	2800 ± 500
Tone Nature (°C)	single
Operating Temperature (gm.)	-30 ~ +70
Weight	38

* Value applying at rated voltage

DIMENSION



DB-E1308



COLOUR	HOUSING	TERMINAL
WHITE	ABS	LEADWIRE

ELECTRICAL SPECIFICATIONS

Model No. 130T3120

Operating Voltage (VDC) 9 ~ 15

Rated Voltage (VDC) 12

* Max. Rated Current (mA.) 260

* Min Sound Output (dBA/1m) 105

* Frequency (Hz.) 2800 ± 500

Tone Nature two

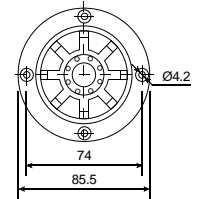
Operating Temperature (°C) -20 ~ +60

Weight (gm.) 80

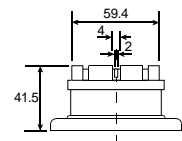
* Value applying at rated voltage

DIMENSION

Top View

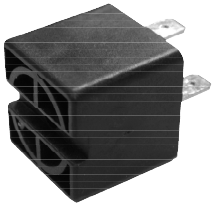


Side View



all dimensions are in mm

DB-E1328



COLOUR	HOUSING	TERMINAL
BLACK	PA6.6	PLUG

ELECTRICAL SPECIFICATIONS

Model No. 132S3120

Operating Voltage Range (VDC) 9 ~ 18

Rated Voltage (VDC) 12

* Max. Rated Current (mA.) 15

* Min Sound Output (dBA/30cm) 88

* Frequency (Hz.) 3300 ± 500

Tone Nature single

Operating Temperature (°C) -20 ~ +85

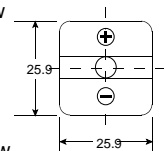
Storage Temperature (°C) -40 ~ +90

Weight (gm.) 10

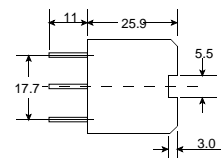
* Value applying at rated voltage

DIMENSION

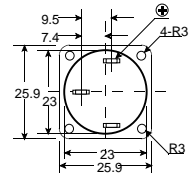
Top View



Side View



Bottom View



all dimensions are in mm

DB-E1358



COLOUR	HOUSING	TERMINAL
BLACK	ABS	LEADWIRE

ELECTRICAL SPECIFICATIONS

Model No. 135R2120

Operating Voltage (VDC) 6 ~ 13

Rated Voltage (VDC) 12

* Max. Rated Current (mA.) 350

* Min Sound Output (dBA/1m) 115

* Frequency (Hz.) 2300 ± 500

Tone Nature siren

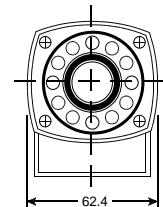
Operating Temperature (°C) -20 ~ +60

Weight (gm.) 120

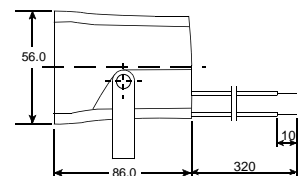
* Value applying at rated voltage

DIMENSION

Top View



Side View



all dimensions are in mm

DB-E1368



COLOUR	HOUSING	TERMINAL
WHITE	ABS	LEADWIRE

ELECTRICAL SPECIFICATIONS

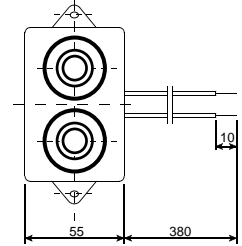
Model No. 136R4120

Operating Voltage (VDC)	6 ~ 12
Rated Voltage (VDC)	12
* Max. Rated Current (mA.)	300
* Min Sound Output (dBA/1m)	105
* Frequency (KHz.)	3200 ~ 4200
Tone Nature	siren
Operating Temperature (°C)	-20 ~ +60
Weight (gm.)	100

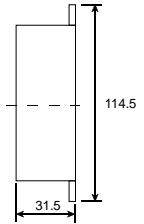
* Value applying at rated voltage

DIMENSION

Top View



Side View



all dimensions are in mm

DB-E1378



COLOUR	HOUSING	TERMINAL
BLACK	ABS	LEADWIRE

ELECTRICAL SPECIFICATIONS

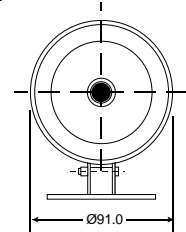
Model No. 137R1120

Operating Voltage (VDC)	6 ~ 12
Rated Voltage (VDC)	12
* Max. Rated Current (mA.)	600
* Min Sound Output (dBA/1m)	112
* Frequency (Hz.)	1500 ± 500
Tone Nature	siren
Operating Temperature (°C)	-20 ~ +60
Weight (gm.)	440

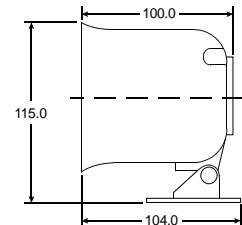
* Value applying at rated voltage

DIMENSION

Top View



Side View



all dimensions are in mm

DB-E1388



COLOUR	HOUSING	TERMINAL
BLACK	ABS	LEADWIRE

ELECTRICAL SPECIFICATIONS

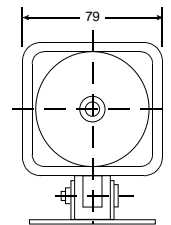
Model No. 138R1120

Operating Voltage (VDC)	6 ~ 12
Rated Voltage (VDC)	12
* Max. Rated Current (mA.)	600
* Min Sound Output (dBA/1m)	108
* Frequency (Hz.)	1500 ± 500
Tone Nature	siren
Operating Temperature (°C)	-20 ~ +60
Weight (gm.)	430

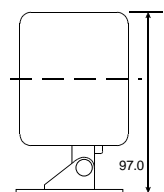
* Value applying at rated voltage

DIMENSION

Top View



Side View



all dimensions are in mm

DB-E1408



COLOUR	HOUSING	TERMINAL
BLACK	ABS	LEADWIRE

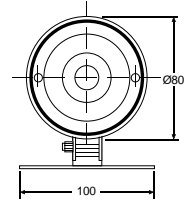
ELECTRICAL SPECIFICATIONS

Model No. 140R1120

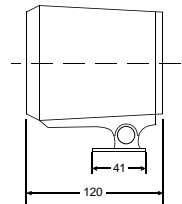
Operating Voltage (VDC)	6 ~ 12
Rated Voltage (VDC)	12
* Max. Rated Current (mA.)	600
* Min Sound Output (dBA/1m)	112
* Frequency (Hz.)	1500±500
Tone Nature	siren
Operating Temperature (°C)	-20 ~ +60
Weight (gm.)	440
* Value applying at rated voltage	

DIMENSION

Top View



Side View



all dimensions are in mm

DB-E1418



COLOUR	HOUSING	TERMINAL
BLACK	PBT	PIN

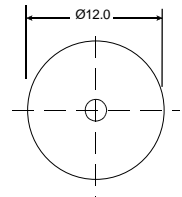
ELECTRICAL SPECIFICATIONS

Model No. 141S5120

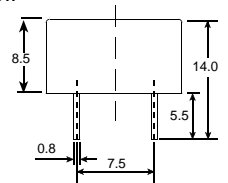
Operating Voltage (VDC)	2.5 ~ 15
Rated Voltage (VDC)	12
* Max. Rated Current (mA.)	8
* Min Sound Output (dBA/10cm)	85
* Frequency (Hz.)	5000 ± 500
Tone Nature	single
Operating Temperature (°C)	-20 ~ +70
Weight (gm.)	4
* Value applying at rated voltage	

DIMENSION

Top View

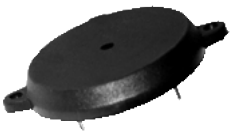


Side View



all dimensions are in mm

DB-E1428



COLOUR	HOUSING	TERMINAL
BLACK	PBT	PIN

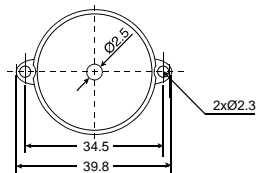
ELECTRICAL SPECIFICATIONS

Model No. 142S3120

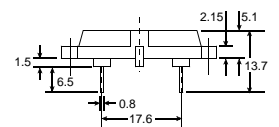
Operating Voltage (VDC)	2.5 ~ 15
Rated Voltage (VDC)	12
* Max. Rated Current (mA.)	8
* Min Sound Output (dBA/30cm)	75
* Frequency (Hz.)	3000±500
Tone Nature	single
Operating Temperature (°C)	-20 ~ +60
Weight (gm.)	6
* Value applying at rated voltage	

DIMENSION

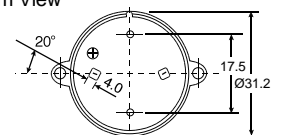
Top View



Side View



Bottom View



all dimensions are in mm

DB-E1438



COLOUR	HOUSING	TERMINAL
BLACK	ABS	LEADWIRE

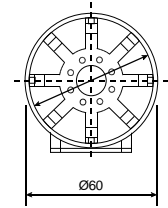
ELECTRICAL SPECIFICATIONS

Model No.	143S3120		
Operating Voltage (VDC)	6 ~ 15		
Rated Voltage (VDC)	12		
* Max. Rated Current (mA.)	200		
* Min Sound Output (dBA/100cm)	95		
* Frequency (Hz.)	2800±500		
Tone Nature	single		
Operating Temperature (°C)	-20 ~ +75		
Weight (gm.)	90		

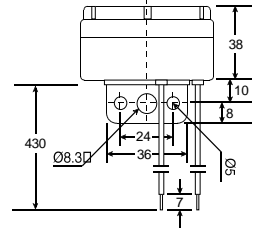
* Value applying at rated voltage

DIMENSION

Top View



Side View



all dimensions are in mm

DB-E1528



COLOUR	HOUSING	TERMINAL
BLACK	ABS	LEADWIRE

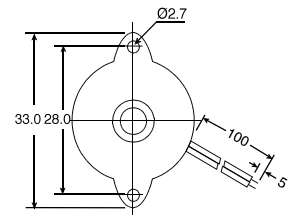
ELECTRICAL SPECIFICATIONS

Model No.	152S3120		
Operating Voltage (VDC)	3 ~ 16		
Rated Voltage (VDC)	12		
* Max. Rated Current (mA.)	8		
* Min Sound Output (dBA/30cm)	90		
* Frequency (Hz.)	3700±500		
Tone Nature	single		
Operating Temperature (°C)	-20 ~ +60		
Weight (gm.)	5		

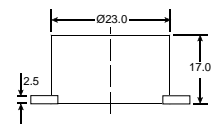
* Value applying at rated voltage

DIMENSION

Top View



Side View



all dimensions are in mm

SL11



COLOUR	HOUSING	TERMINAL
BLACK	ABS	PIN / LEADWIRE

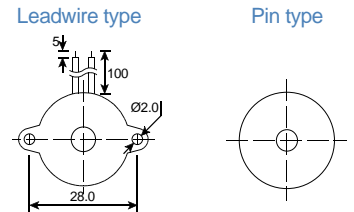
ELECTRICAL SPECIFICATIONS

Model No.	SL11S3120	SL11S3240	SL11S31100	SL11S32200
Operating Voltage	1 ~ 18 VDC	18 ~ 28 VDC	96 ~ 144 VAC	176 ~ 264 VAC
Rated Voltage	12 VDC	24 VDC	110 VAC	220 VAC
* Max. Rated Current (mA.)	15	20	5	5
* Min Sound Output (dBA/30cm)	90	90	75	75
* Frequency (Hz.)	3300±500	3400±500	3300±500	3300±500
Tone Nature	single	single	single	single
Operating Temperature (°C)	-20 ~ +60	-20 ~ +60	-20 ~ +60	-20 ~ +60
Weight (gm.)	8	8	8	8

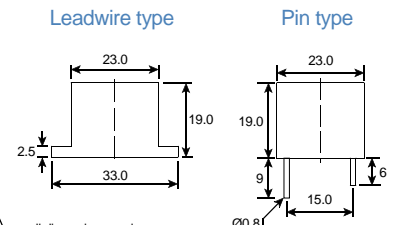
* Value applying at rated voltage

DIMENSION

Top View



Side View



all dimensions are in mm

SL12A



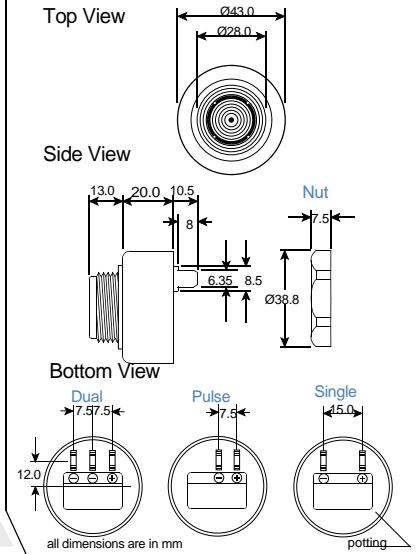
COLOUR	HOUSING	TERMINAL
BLACK	ABS	PLUG

ELECTRICAL SPECIFICATIONS

Model No.	SL12AS3120	SL12APF3120	SL12APN3120	SL12ADF3120	SL12ADN3120
Operating Voltage (VDC)	6 ~ 28	6 ~ 28	6 ~ 28	6 ~ 28	6 ~ 28
Rated Voltage (VDC)	12	12	12	12	12
* Max. Rated Current (mA)	20	20	20	20	20
* Min Sound Output (dBA/30cm)	80	80	80	80	80
* Frequency (Hz)	2900±500	2900±500	2900±500	2900±500	2900±500
Tone Nature	single	fast pulse	slow pulse	single / fast pulse	single / slow pulse
Operating Temperature (°C)	-20 ~ +60	-20 ~ +60	-20 ~ +60	-20 ~ +60	-20 ~ +60
Weight (gm.)	35	35	35	35	35

* Value applying at rated voltage
Pulse Rate at 12 VDC : 3.0±20% Hz (fast pulse) : 1.2±20% Hz (slow pulse)

DIMENSION



SL12B



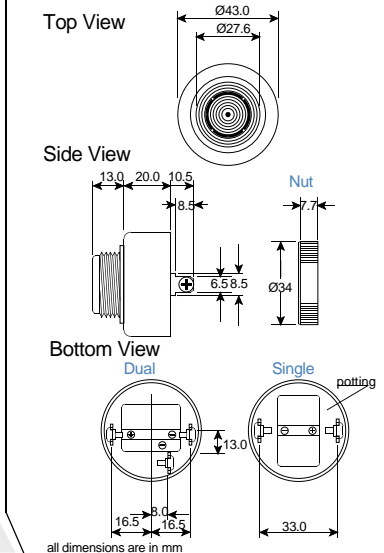
COLOUR	HOUSING	TERMINAL
BLACK	ABS	PLATE

ELECTRICAL SPECIFICATIONS

Model No.	SL12BS3120	SL12BPF3120	SL12BPN3120	SL12BDF3120	SL12BDN3120
Operating Voltage (VDC)	6 ~ 28	6 ~ 28	6 ~ 28	6 ~ 28	6 ~ 28
Rated Voltage (VDC)	12	12	12	12	12
* Max. Rated Current (mA)	20	20	20	20	20
* Min Sound Output (dBA/30cm)	80	80	80	80	80
* Frequency (Hz)	2900±500	2900±500	2900±500	2900±500	2900±500
Tone Nature	single	fast pulse	slow pulse	single / fast pulse	single / slow pulse
Operating Temperature (°C)	-20 ~ +60	-20 ~ +60	-20 ~ +60	-20 ~ +60	-20 ~ +60
Weight (gm.)	35	35	35	35	35

* Value applying at rated voltage
Pulse Rate at 12 VDC : 3.0±20% Hz (fast pulse) : 1.2±20% Hz (slow pulse)

DIMENSION



SL13



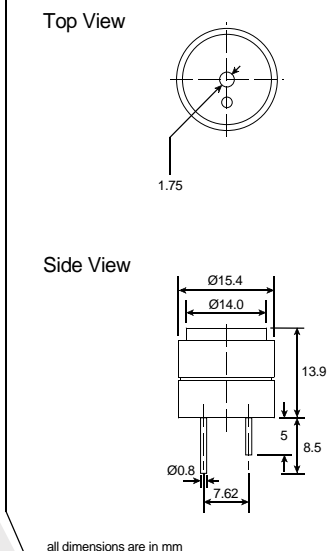
COLOUR	HOUSING	TERMINAL
BLACK	PBT	PIN

ELECTRICAL SPECIFICATIONS

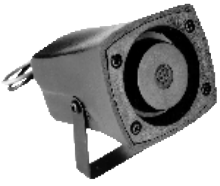
Model No.	SL13S4050	SL13S4120
Operating Voltage (VDC)	1 ~ 12	1 ~ 18
Rated Voltage (VDC)	5	12
* Max. Rated Current (mA)	15	20
* Min Sound Output (dBA/10cm)	83	85
* Frequency (Hz)	4000±500	4000±500
Tone Nature	single	single
Operating Temperature (°C)	-20 ~ +60	-20 ~ +60
Weight (gm.)	2.5	2.5

* Value applying at rated voltage
The pulse rating is 2-7Hz at rated voltage

DIMENSION



SL15



COLOUR	HOUSING	TERMINAL
BLACK	ABS	LEADWIRE

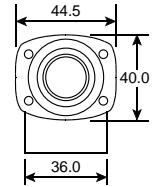
ELECTRICAL SPECIFICATIONS

Model No.	SL15R3120	SL15R3240
Operating Voltage (VDC)	6 ~ 16	12 ~ 28
Rated Voltage (VDC)	12	24
* Max. Rated Current (mA.)	250	150
* Min Sound Output (dBA/30cm)	105	100
* Frequency (Hz.)	1500 ~ 3500	1000 ~ 3500
Tone Nature	siren	siren
Operating Temperature (°C)	-20 ~ +60	-20 ~ +60
Weight (gm.)	75	75

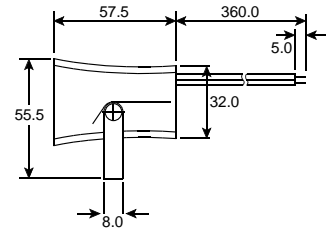
* Value applying at rated voltage

DIMENSION

Top View

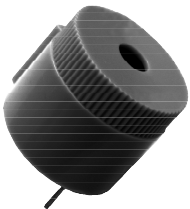


Side View



all dimensions are in mm

DB-E1708



COLOUR	HOUSING	TERMINAL
BLACK	ABS	PIN

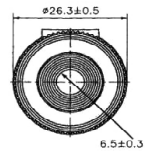
ELECTRICAL SPECIFICATIONS

Model No.	170S3120
Operating Voltage (VDC)	5 ~ 15
Rated Voltage (VDC)	9 / 12
* Max. Rated Current (mA.)	50
* Min Sound Output (dBA/60cm)	95(9V) / 102 (12V)
* Frequency (Hz.)	2800+/-500
Tone Nature	single
Operating Temperature (°C)	-20 ~ +70
Weight (gm.)	15

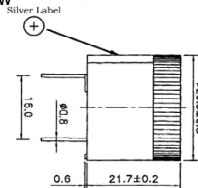
* Value applying at rated voltage

DIMENSION

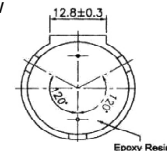
Top View



Side View



Bottom View



all dimensions are in mm