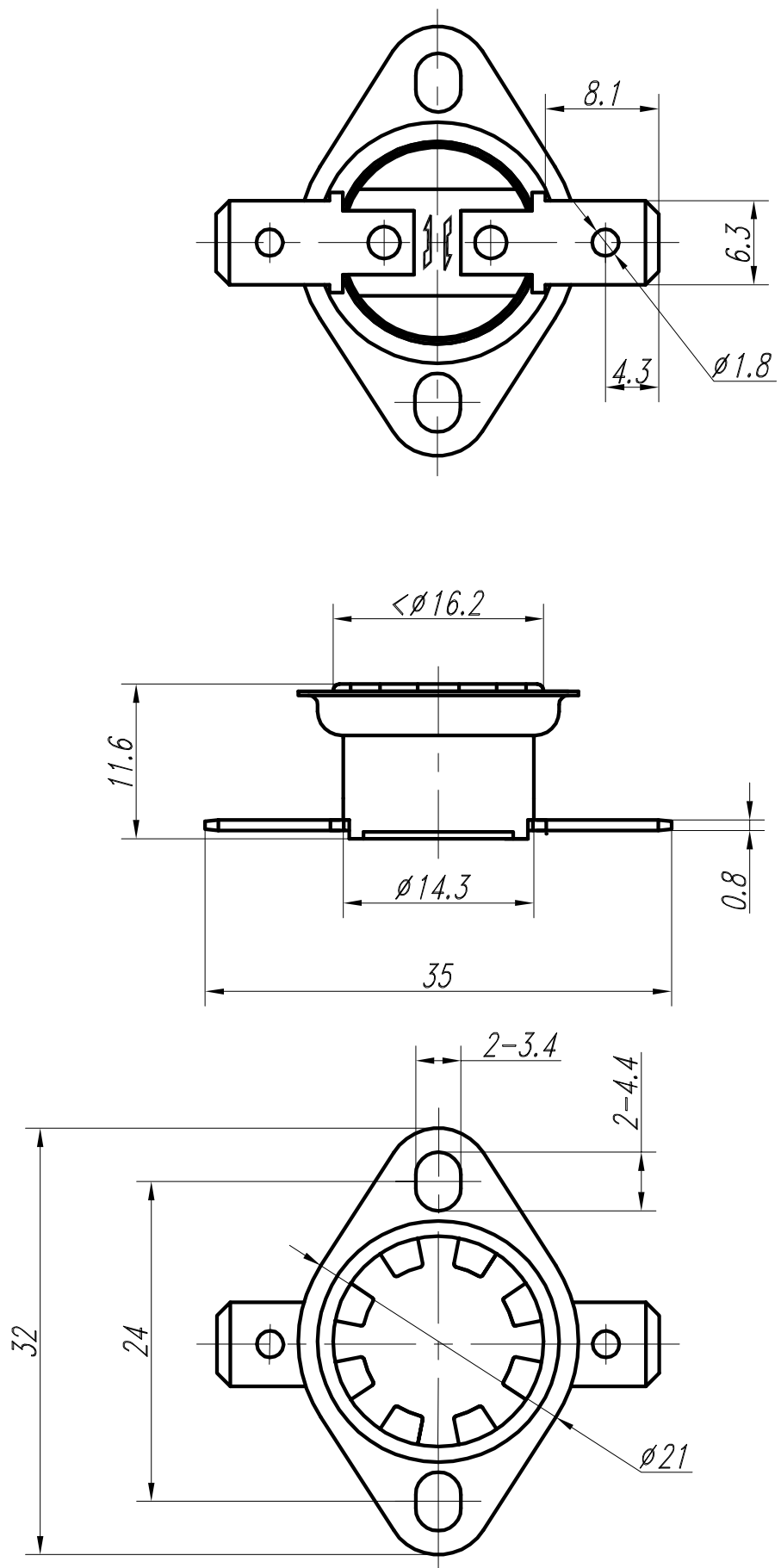


A

B

C

D



Rated voltage	AC 250 V 50Hz/60Hz	
Rated current	16A （resistive load）	
Contacts	SPST, auto-reset	
Operating temperature	OFF: 70±3.0℃ (open)	ON: 50±7℃ (close)
Material of base	phenolic resin	
Material of sensing cover	aluminum	
Material of termina	nickel plated brass	
Insulation Resistance	More than 10MW (with DC 500V megger)	
Contact Resistance	≤30m Ω	
Max. ambient temperature	140℃	
Life(resistive load)	more than 60,000 cycles;	
Approved	TUV	
Marking series no.	KSD301 (Laser marking or tool impression)	
Client's PN		

Customer should sign and stamp on this drawing before placing orders. If customer place orders without sign and stamp, we will consider customer has confirmed this drawing.

	Undeclared tolerance: ±0.5mm		Title:  Snap-Action Thermostat	Drawing no.: <b>CS170357</b>	REV.: <b>A</b>
	Unit: mm	Scale: 2 : 1			
	Size: A3			ERP no.:	
Drawn by		洗崇礼	Type of product or spec. of material: <b>KSD301-7.0/16BL15S20</b>		
Checked by					
Date		2017-9-19	TONGBAO-HUALONG CONTROLS CO. , LTD.		