

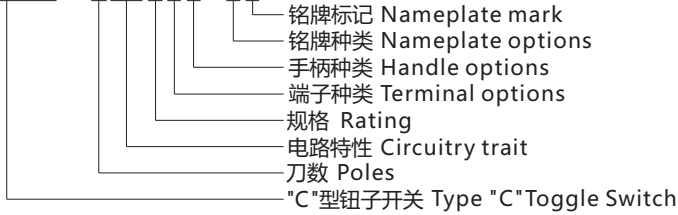


# 中型钮子开关 Medium Toggle Switch KN3 Series



## 型号说明 Ordering Information

KN3 (C) - 102APE-B2



## 技术特性 Specification

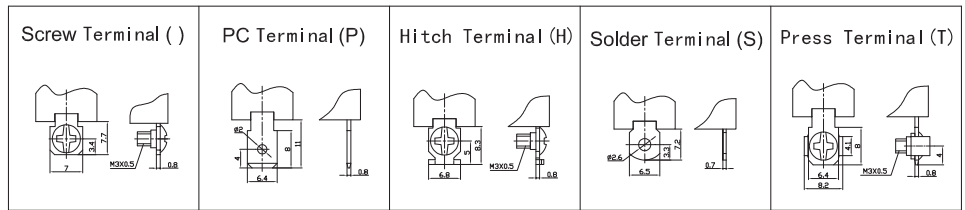
- 规格 Rating: ( ) 10A 125VAC; 6A 250VAC  
(A) 15A 125VAC; 10A 250VAC  
(AA) 20A 125VAC; 15A 250VAC
- 接触电阻 Contact Resistance: 50mΩ max
- 绝缘电阻 Insulation Resistance: 500VDC 1000MΩ min
- 耐电压 Dielectric Strength: 1500VAC, 1Minute
- 操作温度 Operating Temperature: -25°C ~ +85°C
- 电气寿命 Electrical Life: 10,000 Cycles

## 电路特性 Circuitry trait

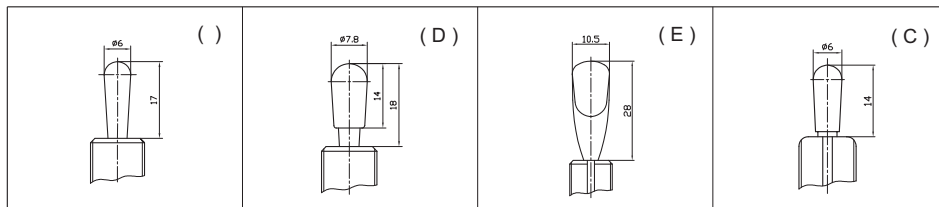
01	ON	-	OFF
02	ON	-	ON
12	ON	-	(ON)
03	ON	OFF	ON
13	ON	OFF	(ON)
23	(ON)	OFF	(ON)

( ) : 回弹指示 Indicates Momentary

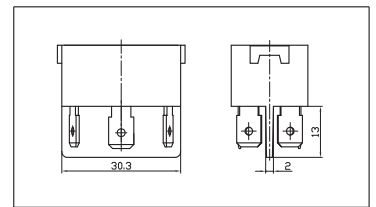
## 端子种类 Terminal options



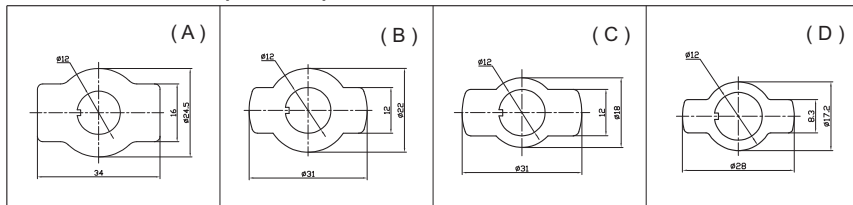
## 手柄种类 Handle options



## 特殊基座 Special base



## 铭牌种类 Nameplate options

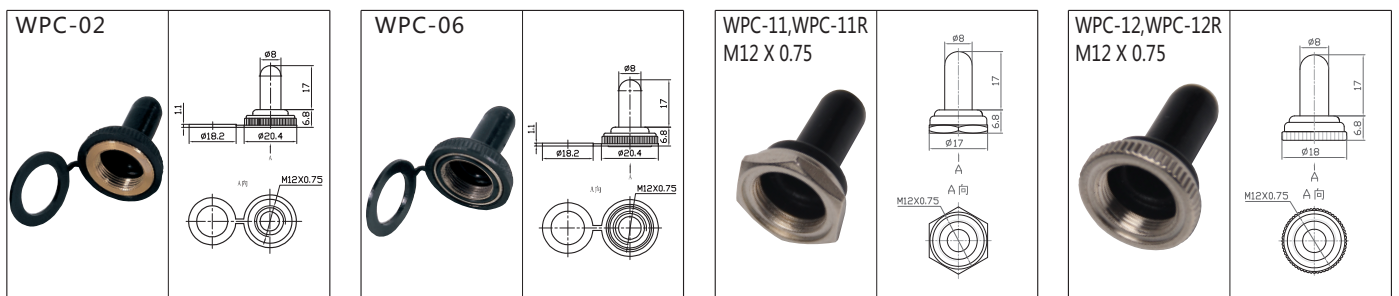


## 铭牌标记 Nameplate mark 基座颜色 Base color

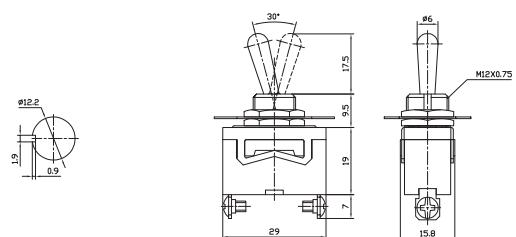
1	ON - OFF
2	ON - ON
3	ON - OFF - ON

材料 Material	基座颜色 Base color	
电木 Bakelite	黑 Black	棕 Brown
聚碳酸酯 PC	红 Red	
三聚氰胺 Melamine	蓝 Blue	

## 防水帽 Water proof cap


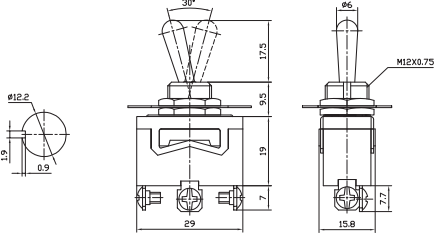

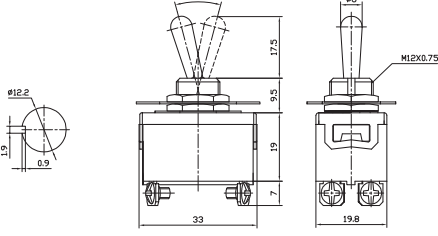

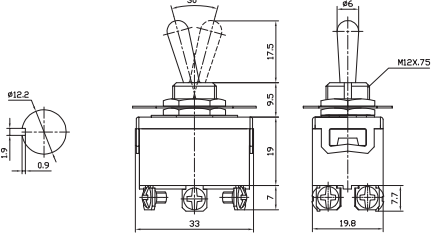

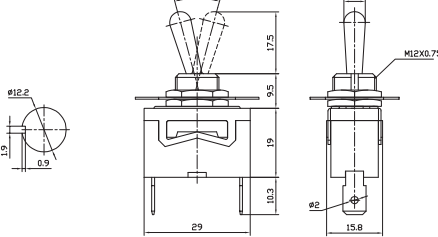

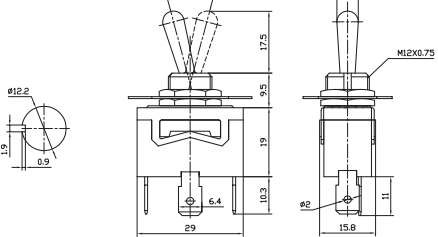

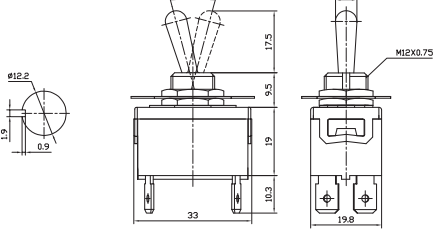

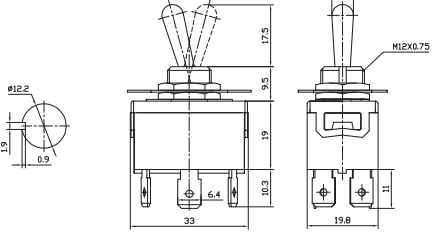


KN3(C)-101 ON-OFF  
KN3(C)-101A ON-OFF  
SPST 2P





# 中型钮子开关 Medium Toggle Switch KN3 Series

	<p>KN3(C)-102 KN3(C)-102A ON-ON            KN3(C)-112 KN3(C)-112A ON-(ON)            KN3(C)-103 KN3(C)-103A ON-OFF-ON            KN3(C)-113 KN3(C)-113A ON-OFF-(ON)            KN3(C)-123 KN3(C)-123A (ON)-OFF-(ON)            SPDT 3P</p>	
	<p>KN3(C)-201 ON-OFF            KN3(C)-201A ON-OFF            DPST 4P</p>	
	<p>KN3(C)-202 KN3(C)-202A ON-ON            KN3(C)-212 KN3(C)-212A ON-(ON)            KN3(C)-203 KN3(C)-203A ON-OFF-ON            KN3(C)-213 KN3(C)-213A ON-OFF-(ON)            KN3(C)-223 KN3(C)-223A (ON)-OFF-(ON)            DPDT 6P</p>	
	<p>KN3(C)-101P ON-OFF            KN3(C)-101AP ON-OFF            SPST 2P</p>	
	<p>KN3(C)-102P KN3(C)-102AP ON-ON            KN3(C)-112P KN3(C)-112AP ON-(ON)            KN3(C)-103P KN3(C)-103AP ON-OFF-ON            KN3(C)-113P KN3(C)-113AP ON-OFF-(ON)            KN3(C)-123P KN3(C)-123AP (ON)-OFF-(ON)            SPDT 3P</p>	
	<p>KN3(C)-201P ON-OFF            KN3(C)-201AP ON-OFF            DPST 4P</p>	
	<p>KN3(C)-202P KN3(C)-202AP ON-ON            KN3(C)-212P KN3(C)-212AP ON-(ON)            KN3(C)-203P KN3(C)-203AP ON-OFF-ON            KN3(C)-213P KN3(C)-213AP ON-OFF-(ON)            KN3(C)-223P KN3(C)-223AP (ON)-OFF-(ON)            DPDT 6P</p>	



# 中型钮子开关 Medium Toggle Switch KN3 Series

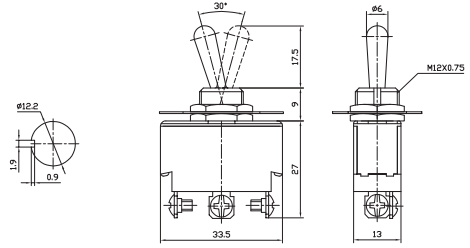
	<p> <b>KN3(C)-102AE</b> ON-ON  <b>KN3(C)-112AE</b> ON-(ON)  <b>KN3(C)-103AE</b> ON-OFF-ON  <b>KN3(C)-113AE</b> ON-OFF-(ON)  <b>KN3(C)-123AE</b> (ON)-OFF-(ON)            SPDT 3P         </p>	
	<p> <b>KN3(C)-202AE</b> ON-ON  <b>KN3(C)-212AE</b> ON-(ON)  <b>KN3(C)-203AE</b> ON-OFF-ON  <b>KN3(C)-213AE</b> ON-OFF-(ON)  <b>KN3(C)-223AE</b> (ON)-OFF-(ON)            DPDT 6P         </p>	
	<p> <b>KN3(A)-101</b> ON-OFF  <b>KN3(A)-101A</b> ON-OFF            SPST 2P            UL Rating: 20A 125VAC; 10A 250VAC; 3/4HP 125/250VAC         </p>	
	<p> <b>KN3(A)-102</b> <b>KN3(A)-102A</b> ON-ON  <b>KN3(A)-112</b> <b>KN3(A)-112A</b> ON-(ON)  <b>KN3(A)-103</b> <b>KN3(A)-103A</b> ON-OFF-ON  <b>KN3(A)-113</b> <b>KN3(A)-113A</b> ON-OFF-(ON)  <b>KN3(A)-123</b> <b>KN3(A)-123A</b> (ON)-OFF-(ON)            SPDT 3P            UL Rating: 20A 125VAC; 10A 250VAC; 3/4HP 125/250VAC         </p>	
	<p> <b>KN3(A)-101P</b> ON-OFF  <b>KN3(A)-101AP</b> ON-OFF            SPST 2P            UL Rating: 20A 125VAC; 10A 250VAC; 3/4HP 125/250VAC         </p>	
	<p> <b>KN3(A)-102P</b> <b>KN3(A)-102AP</b> ON-ON  <b>KN3(A)-112P</b> <b>KN3(A)-112AP</b> ON-(ON)  <b>KN3(A)-103P</b> <b>KN3(A)-103AP</b> ON-OFF-ON  <b>KN3(A)-113P</b> <b>KN3(A)-113AP</b> ON-OFF-(ON)  <b>KN3(A)-123P</b> <b>KN3(A)-123AP</b> (ON)-OFF-(ON)            SPDT 3P            UL Rating: 20A 125VAC; 10A 250VAC; 3/4HP 125/250VAC         </p>	
	<p> <b>KN3(B)-101</b> ON-OFF  <b>KN3(B)-101A</b> ON-OFF            SPST 2P         </p>	



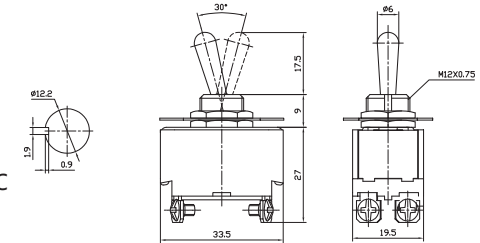
# 中型钮子开关 Medium Toggle Switch KN3 Series



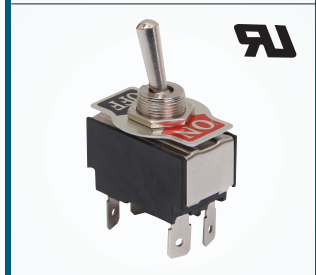
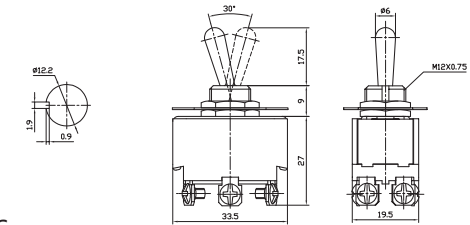
KN3(B)-102 KN3(B)-102A ON-ON  
 KN3(B)-112 KN3(B)-112A ON-(ON)  
 KN3(B)-103 KN3(B)-103A ON-OFF-ON  
 KN3(B)-113 KN3(B)-113A ON-OFF-(ON)  
 KN3(B)-123 KN3(B)-123A (ON)-OFF-(ON)  
 SPDT 3P



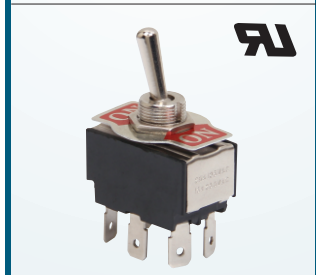
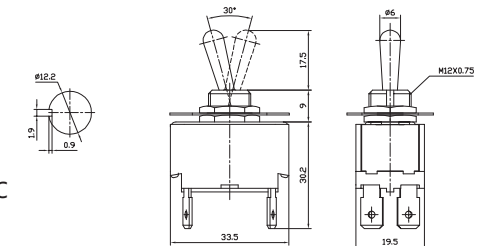
KN3(B)-201 ON-OFF  
 KN3(B)-201A ON-OFF  
 DPST 4P  
 UL Rating: 20A 125VAC; 10A 250VAC; 1-1/2HP 125/250VAC



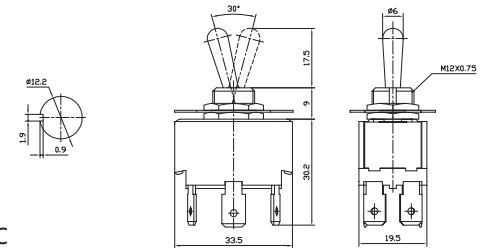
KN3(B)-202 KN3(B)-202A ON-ON  
 KN3(B)-212 KN3(B)-212A ON-(ON)  
 KN3(B)-203 KN3(B)-203A ON-OFF-ON  
 KN3(B)-213 KN3(B)-213A ON-OFF-(ON)  
 KN3(B)-223 KN3(B)-223A (ON)-OFF-(ON)  
 DPDT 6P  
 UL Rating: 20A 125VAC; 10A 250VAC; 1-1/2HP 125/250VAC



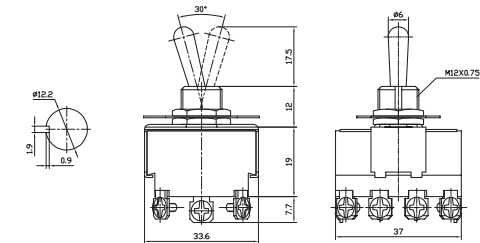
KN3(B)-201P ON-OFF  
 KN3(B)-201AP ON-OFF  
 DPST 4P  
 UL Rating: 20A 125VAC; 10A 250VAC; 1-1/2HP 125/250VAC



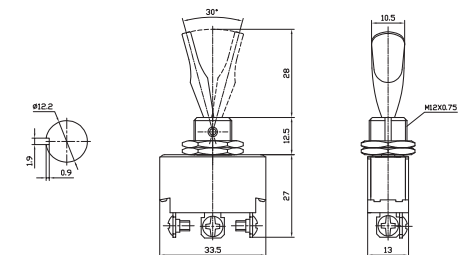
KN3(B)-202P KN3(B)-202AP ON-ON  
 KN3(B)-212P KN3(B)-212AP ON-(ON)  
 KN3(B)-203P KN3(B)-203AP ON-OFF-ON  
 KN3(B)-213P KN3(B)-213AP ON-OFF-(ON)  
 KN3(B)-223P KN3(B)-223AP (ON)-OFF-(ON)  
 DPDT 6P  
 UL Rating: 20A 125VAC; 10A 250VAC; 1-1/2HP 125/250VAC



KN3(B)-402 ON-ON  
 KN3(B)-402A ON-ON  
 KN3(B)-403 ON-OFF-ON  
 KN3(B)-403A ON-OFF-ON  
 4PDT 12P



KN3(B)-102AE ON-ON  
 KN3(B)-112AE ON-(ON)  
 KN3(B)-103AE ON-OFF-ON  
 KN3(B)-113AE ON-OFF-(ON)  
 KN3(B)-123AE (ON)-OFF-(ON)  
 SPDT 3P





# 中型钮子开关 Medium Toggle Switch KN3 Series

	<p> <b>KN3(B)-202AE</b> ON-ON  <b>KN3(B)-212AE</b> ON-(ON)  <b>KN3(B)-203AE</b> ON-OFF-ON  <b>KN3(B)-213AE</b> ON-OFF-(ON)  <b>KN3(B)-223AE</b> (ON)-OFF-(ON)            DPDT 6P         </p>	
	<p> <b>KN3(D)-101</b> ON-OFF  <b>KN3(D)-111</b> (ON)-OFF            6A 125VAC; 3A 250VAC; 25A 12VDC            SPST 2P         </p>	
	<p> <b>KN3(D)-102</b> ON-ON  <b>KN3(D)-103</b> ON-OFF-ON  <b>KN3(D)-123</b> (ON)-OFF-(ON)            6A 125VAC; 3A 250VAC; 25A 12VDC            SPDT 3P         </p>	
	<p> <b>KN3(D)-202</b> ON-ON            DPDT 6P            10A 125VAC; 5A 250VAC         </p>	
	<p> <b>KN3(E)-101</b> ON-OFF            6A 125VAC; 3A 250VAC            SPST 2P            (PLASTIC CAP)         </p>	
	<p> <b>KN3(E)-101P</b> ON-OFF            6A 125VAC; 3A 250VAC            SPST 2P            (PLASTIC CAP)         </p>	
	<p> <b>KN3(E)-101MP</b> ON-OFF            6A 125VAC; 3A 250VAC            SPST 2P            (METAL LEVER)         </p>	

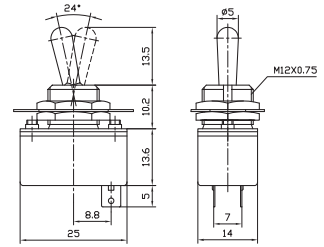




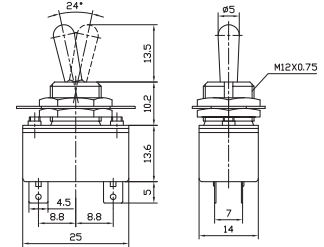
# 中型钮子开关 Medium Toggle Switch KN3 Series



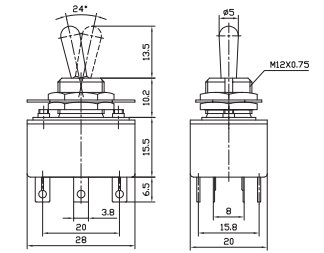
**KN3-1** ON-OFF  
4A 125VAC; 2A 250VAC  
SPST 2P



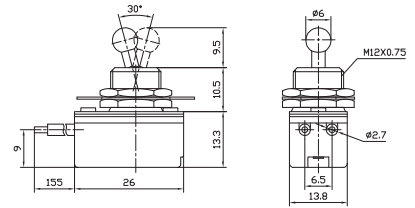
**KN3-2** ON-OFF  
4A 125VAC; 2A 250VAC  
SPDT 4P



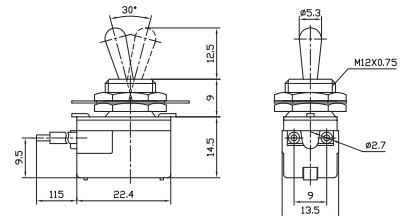
**KN3-3** ON-ON  
5A 125VAC; 3A 250VAC  
DPDT 6P



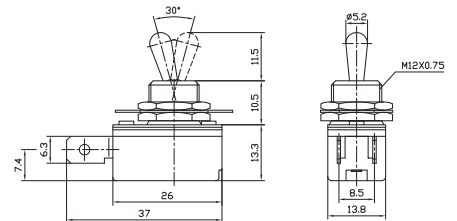
**KNS-1** ON-OFF  
6A 125VAC; 3A 250VAC; 10A 12VDC  
SPST 2P



**KNS-2** ON-OFF  
6A 125VAC; 3A 250VAC; 10A 12VDC  
SPST 2P



**KNH-1** ON-OFF  
6A 125VAC; 3A 250VAC; 10A 12VDC  
SPST 2P



**KNH-1S** ON-OFF  
6A 125VAC; 3A 250VAC; 10A 12VDC  
SPST 2P(with screw)

