


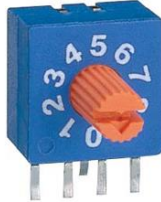


## ERD SERIES

### 10x10 SIZE SEALED CONSTRUCTION ROTARY TYPE

PIN OUT (3:3)		PIN OUT(1:4)	
			
<b>ERD 1xxxx</b> (Flat Type)	<b>ERD 2xxxx</b> (Shaft Type)	<b>ERD 4xxxx</b> (Flat Type)	<b>ERD 5xxxx</b> (Shaft Type)

## ■ FEATURES

- Molded-in terminals and fully sealed construction.
- All plastics UL 94V-0 grade fire retardant.
- Reliable contact and long-term stability.
- Binary decimal (8 or 10 positions) and hexadecimal (16 positions), real and complementary codes available.
- Pin-out is compatible with most of current equivalents.
- Gold plated contact to ensure low contact resistance.
- RoHS Compliant

## ■ APPLICATIONS

- Address switching applications
- Data storage devices
- Computer and peripherals
- Instrumentation

## ■ SPECIFICATIONS

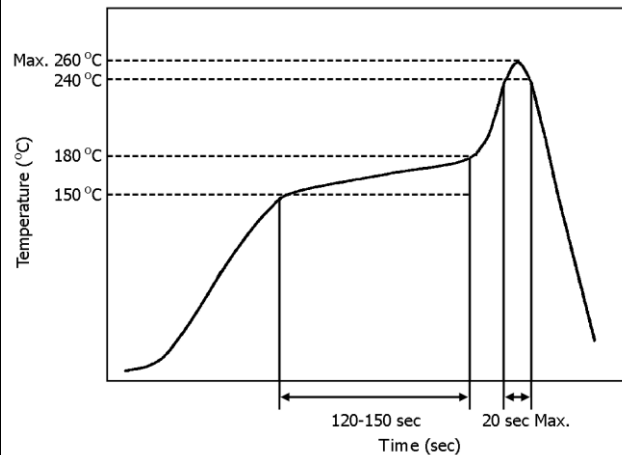
### 1.ELECTRICAL

● Contact rating	switching	25mA, 24VDC
	non-switching	100mA
● Contact resistance (initial)	100mΩ Max.	
● Insulation resistance	1000MΩ Min. at 100VDC	
● Dielectric strength	250VAC Min. for 60 seconds	

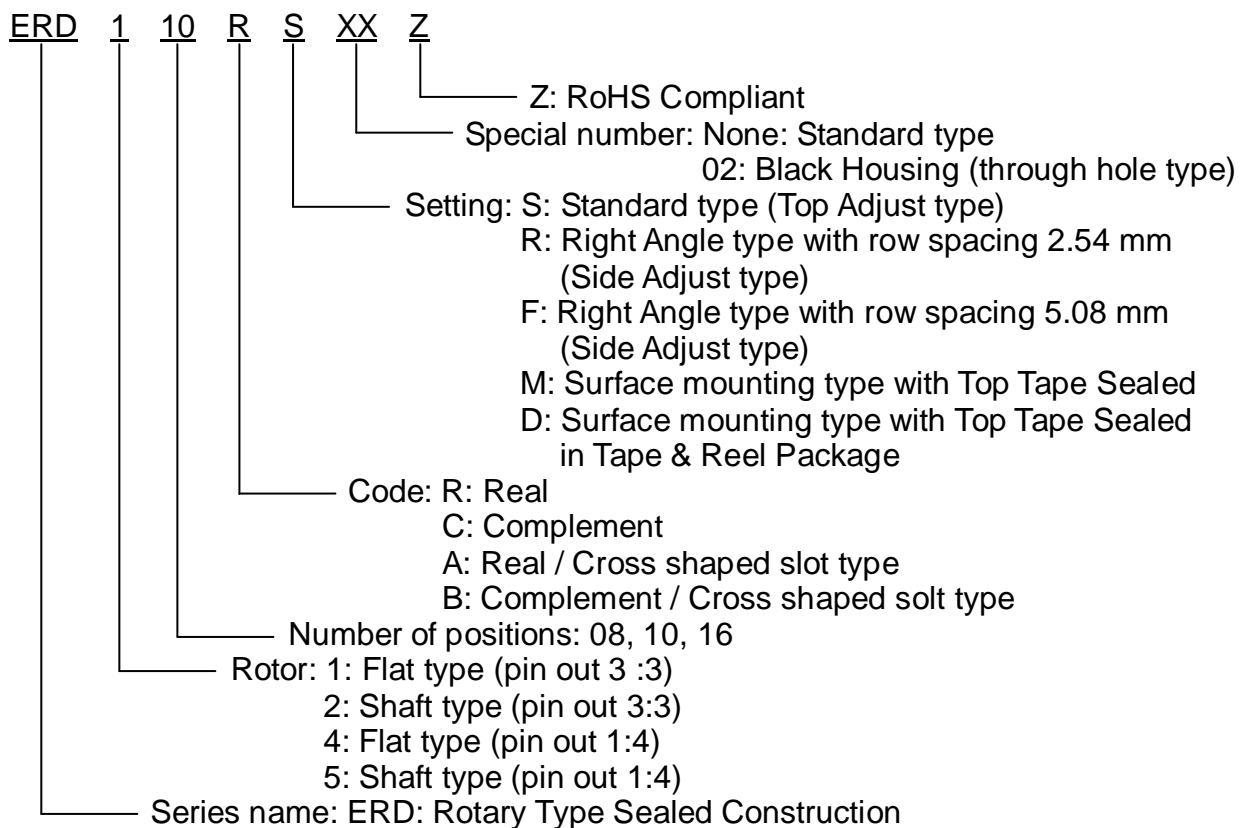
### 2.MECHANICAL AND ENVIRONMENTAL

● Temperature rating	operating	-25℃ to +70℃
	storage	-40℃ to +85℃
● Operation force	500 gf-cm Max.	

● Mechanical life	1000 steps
● Vibration	10Hz-55Hz-10Hz for 6 Hrs.
● Solderability (for through hole type)	After flux 230±5°C for 5±0.5 seconds, 95% coverage
● Resistance to soldering heat (for through hole type)	260±5°C for 5±1 seconds
● Reflow soldering heat for SMT type (reference only)	240°C for 20 seconds or less, peak temperature 260°C or less



## ■ PART NUMBERING SYSTEM



## CODE

PIN NO.	POSITIONS															
	0	1	2	3	4	5	6	7	8	9	A	B	C	D	E	F
1	○	●	○	●	○	●	○	●	○	●	○	●	○	●	○	●
2	○	○	●	●	○	○	●	●	○	○	●	●	○	○	●	●
4	○	○	○	○	●	●	●	●	○	○	○	○	●	●	●	●
8	○	○	○	○	○	○	○	○	●	●	●	●	●	●	●	●

●... Real Code

Rotor color:

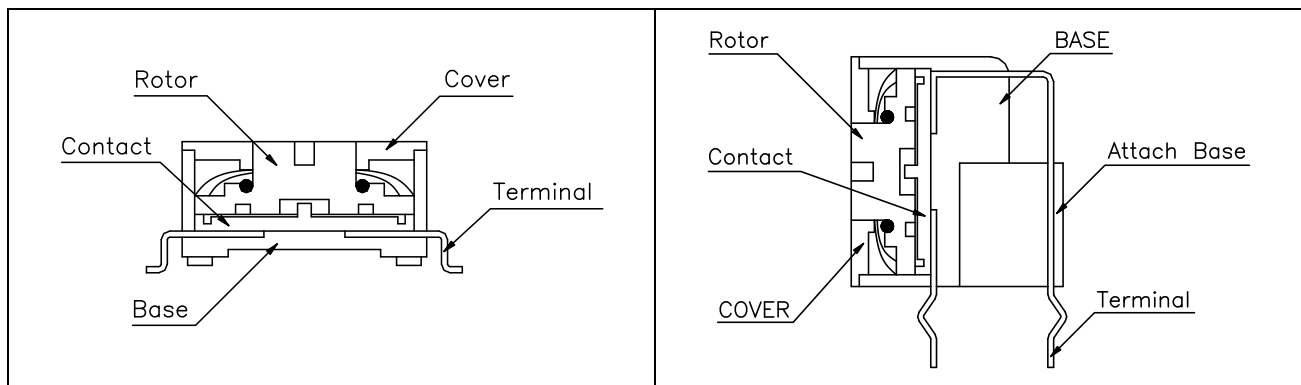
White (3:3), Yellow (1:4)

○... Complement Code

Rotor color:

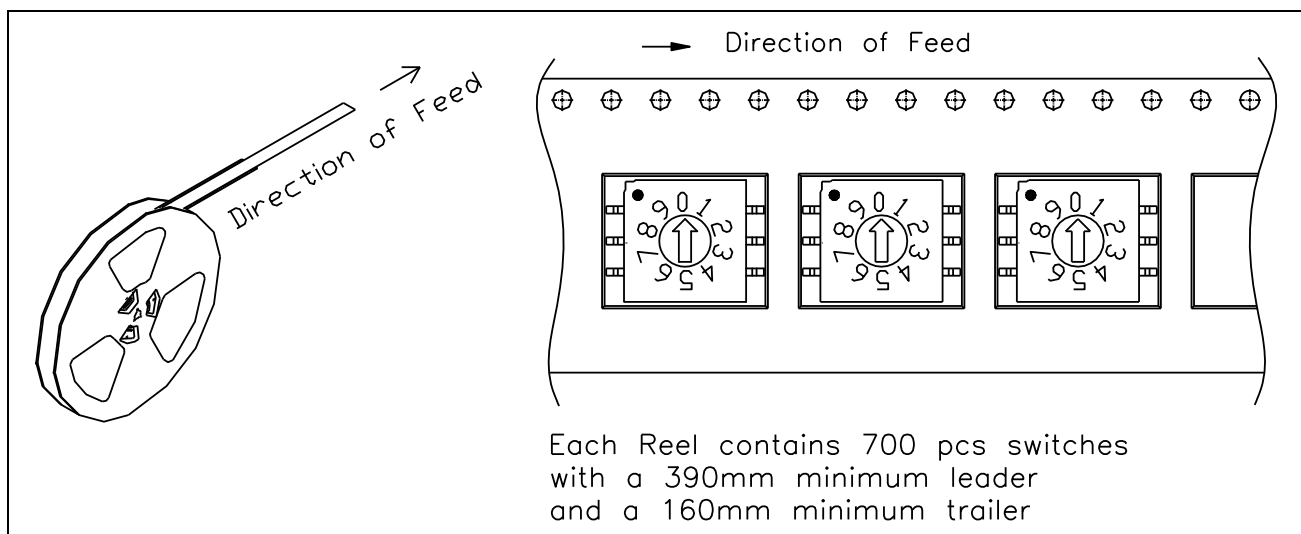
Red (3:3), Orange (1:4)

## CONSTRUCTION



## PACKING

### 1. Tape & Reel Packaging (Per EIA STANDARD)

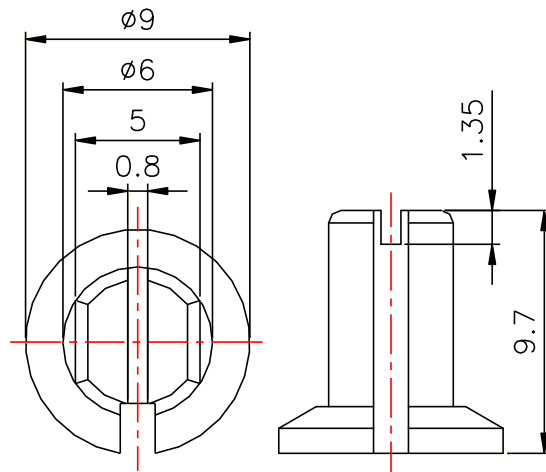


## ■ OPTIONS

1.Special marking available upon request

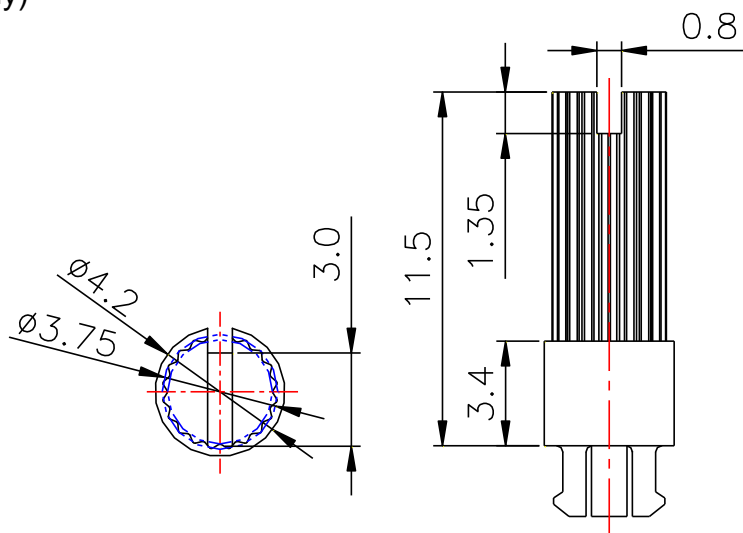
2.Shaft Cover

- 418-80100 (White 3:3)
- 418-80200 (Red 3:3)
- 418-80300 (Yellow 1:4)
- 418-80400 (Orange 1:4)



3.Shaft (For Cross Slot Type Only)

- 418-90010 (White 3:3)
- 418-90020 (Red 3:3)

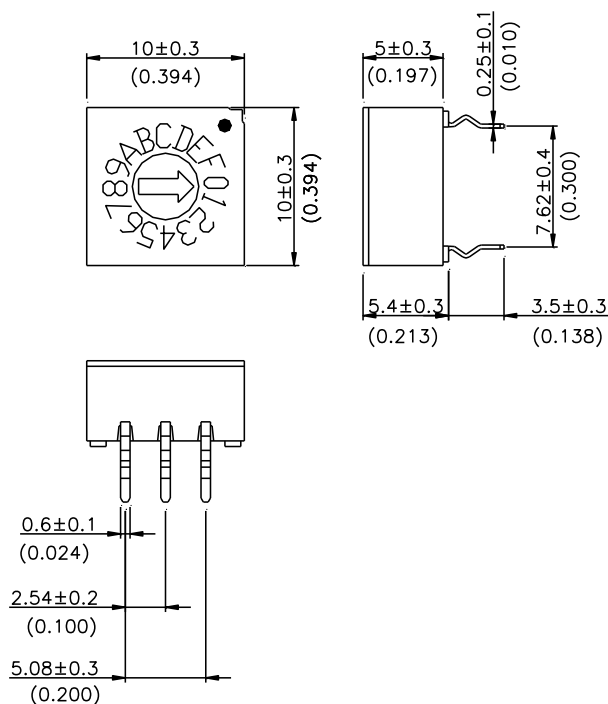


## ■ INTRODUCTION to ECE ROTARY DIP SWITCH

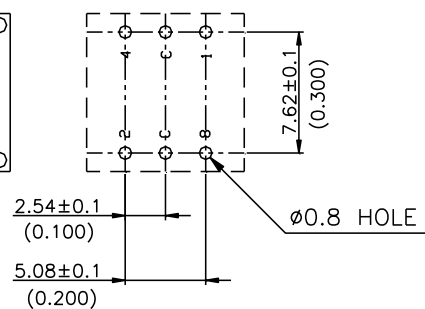
SIZE	POSITIONS	CODE	PIN OUT	ROTOR	TYPE	PART NUMBER
10x10	8,10,16	REAL, COMPLEMENT	3:3	FLAT, SHAFT	STANDARD	ERD1xxxS, ERD2xxxS
					RIGHT ANGLE	ERD1xxxR/F, ERD2xxR/F
				FLAT	SMT	ERD1xxxM
					SMT IN T&R	ERD1xxxD
			1:4	FLAT, SHAFT	STANDARD	ERD4xxxS, ERD5xxxS
					RIGHT ANGLE	ERD4xxxR/F, ERD5xxxR/F
				FLAT	SMT	ERD4xxxM
					SMT IN T&R	ERD4xxxD

## ■ DIMENSIONS AND CIRCUITRY UNIT:mm(inch) PIN OUT 3:3

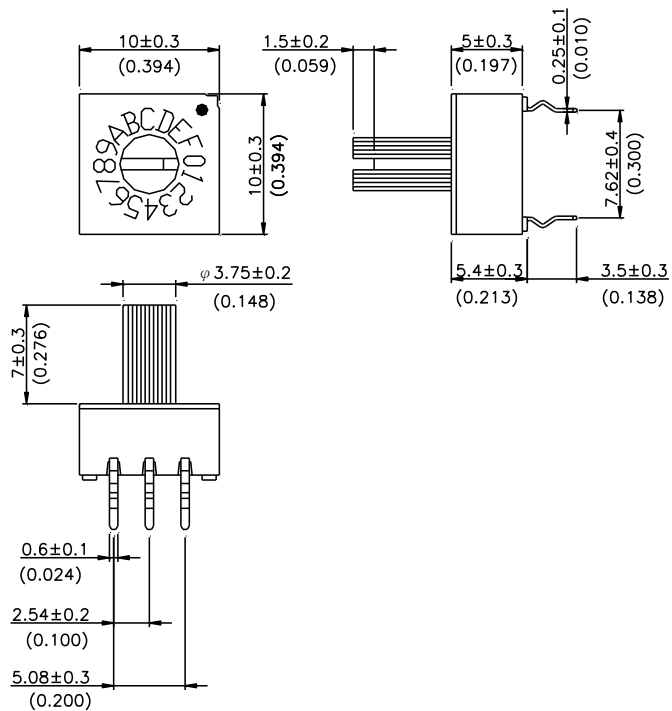
ERD1XXXS Flat Type



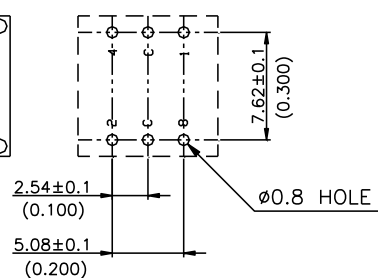
P.C.B. LAYOUT (TOP VIEW)



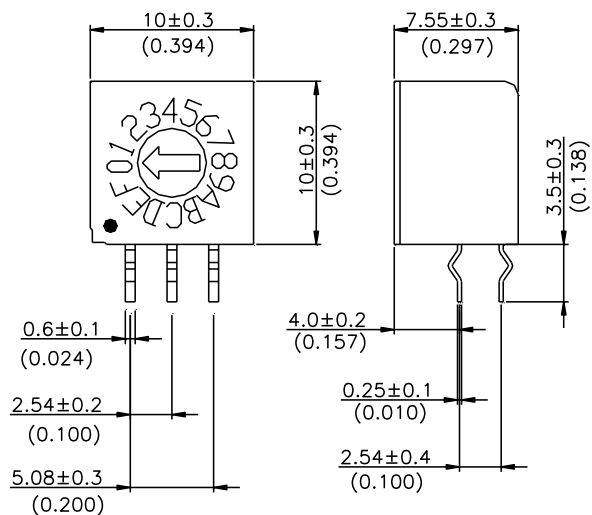
ERD2XXXS Shaft Type



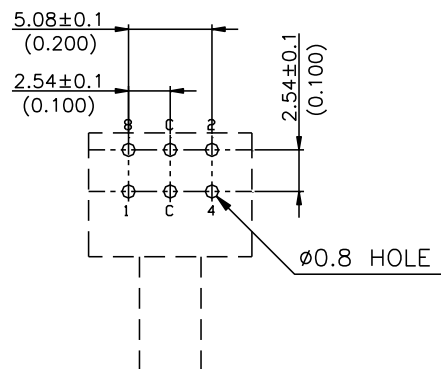
P.C.B. LAYOUT (TOP VIEW)



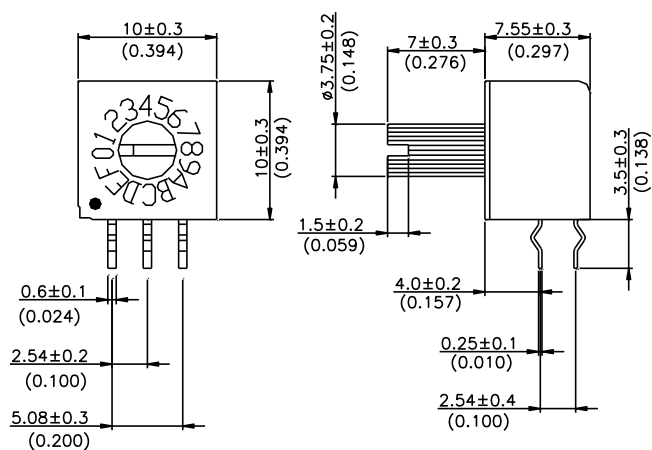
ERD1XXXR Flat Type



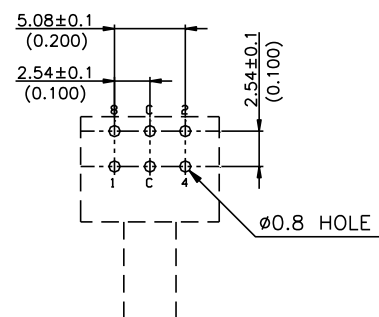
P.C.B. LAYOUT  
(TOP VIEW)



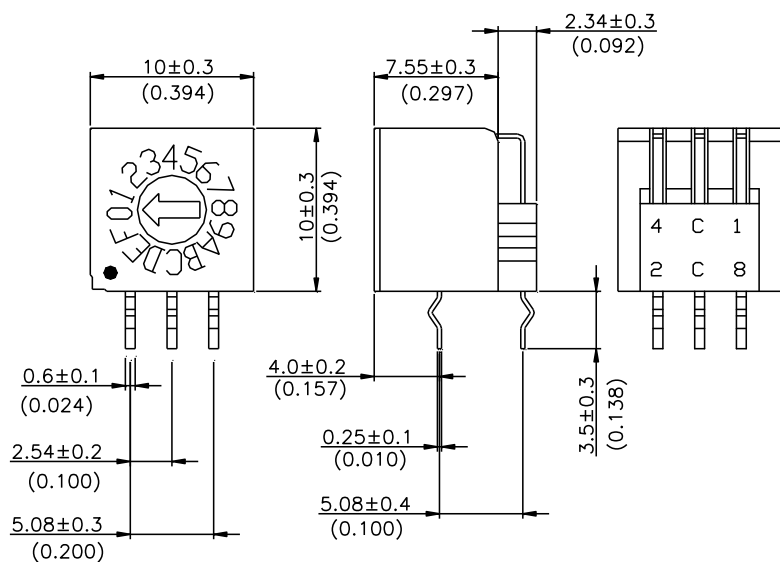
ERD2XXXR Shaft Type



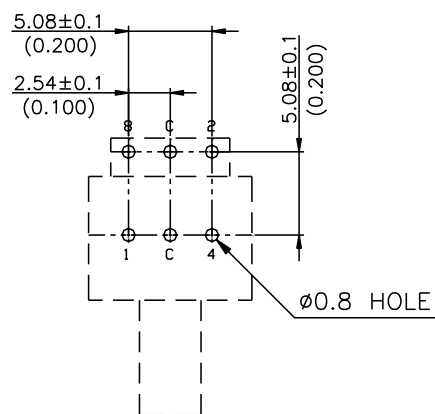
P.C.B. LAYOUT  
(TOP VIEW)



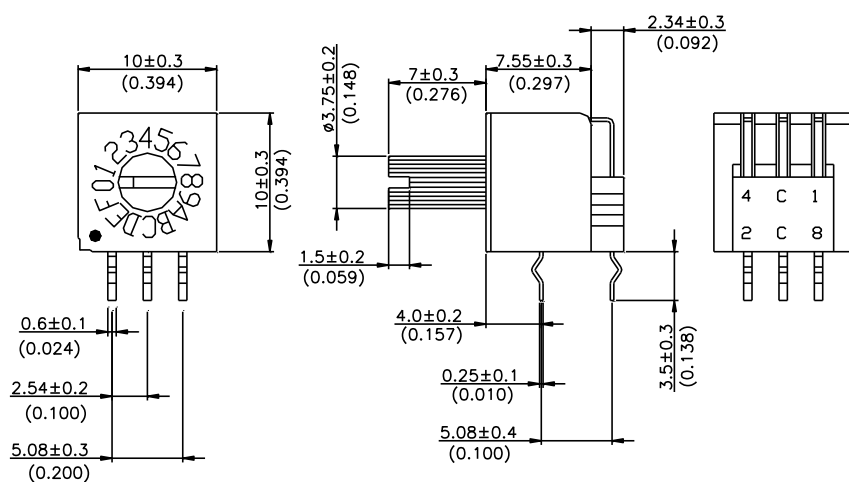
## ERD1XXXF Flat Type



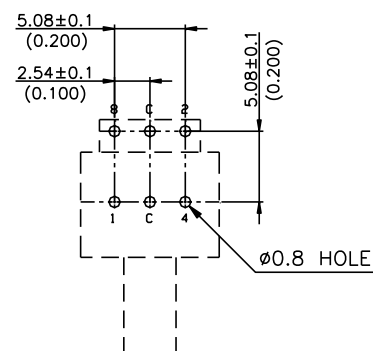
## P.C.B. LAYOUT (TOP VIEW)



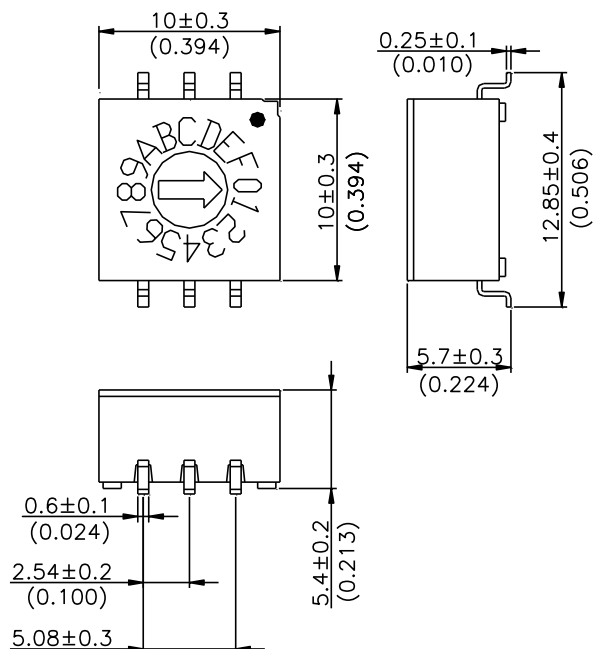
## ERD2XXXF Shaft Type



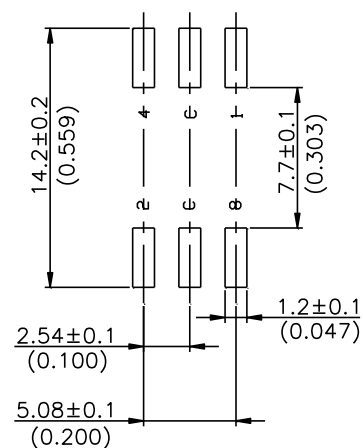
## P.C.B. LAYOUT (TOP VIEW)



ERD1XXM Flat Type

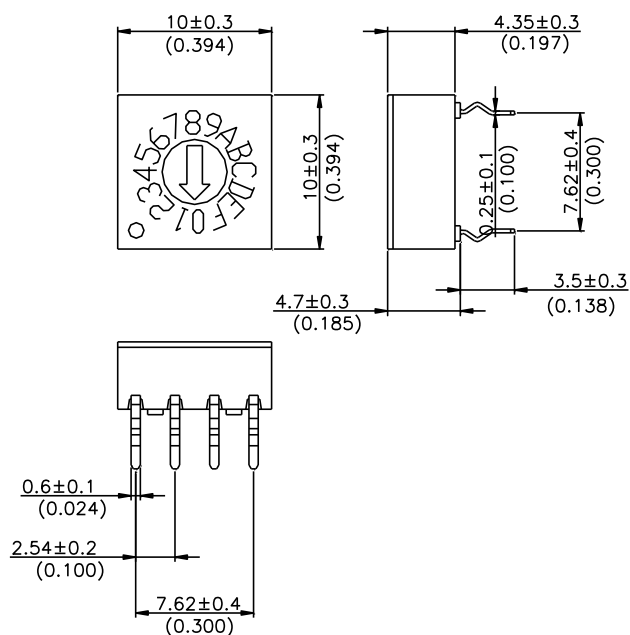


P.C.B. LAYOUT  
(TOP VIEW)

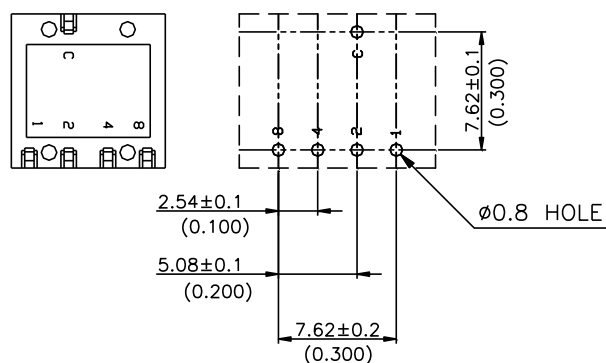


## ■ DIMENSIONS AND CIRCUITRY UNIT:mm(inch) PIN OUT 1:4

ERD4XXS Flat Type

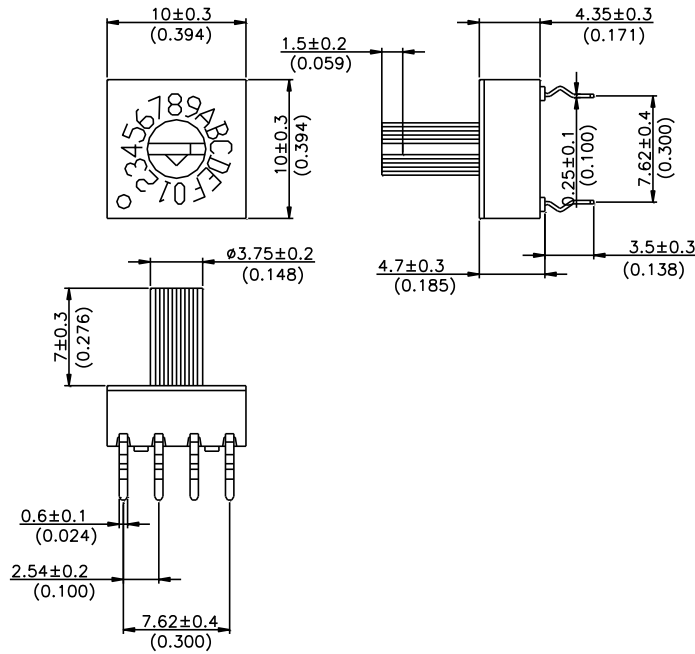


P.C.B. LAYOUT  
(TOP VIEW)

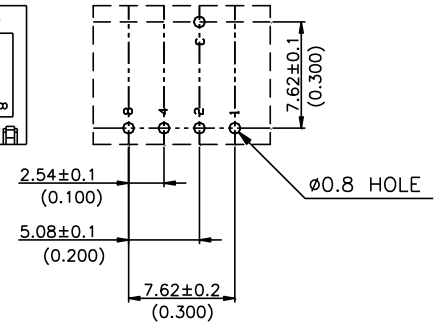




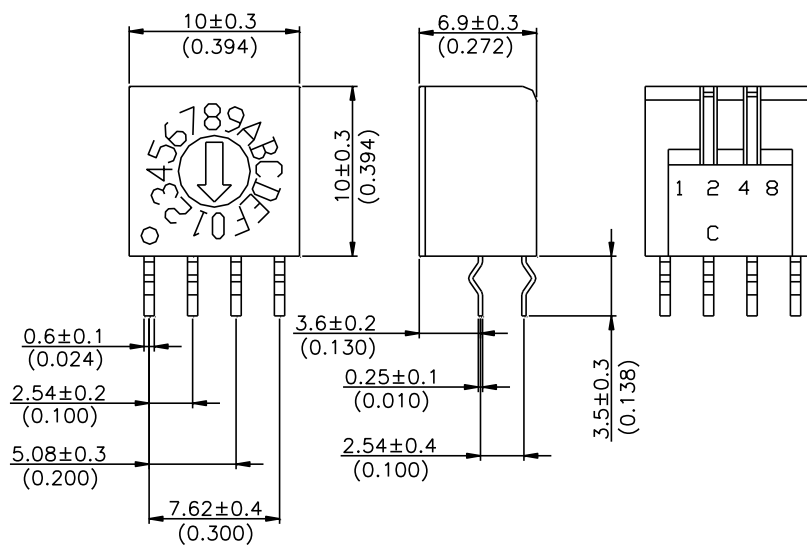
ERD5XXXS Shaft Type



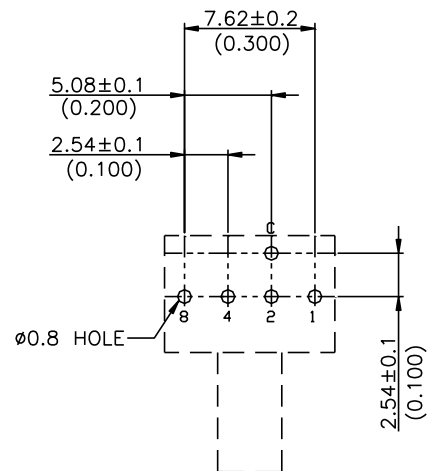
P.C.B. LAYOUT (TOP VIEW)



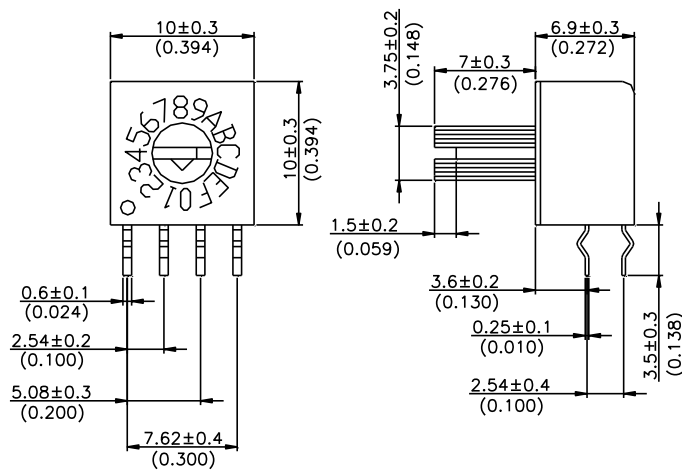
ERD4XXXR Flat Type



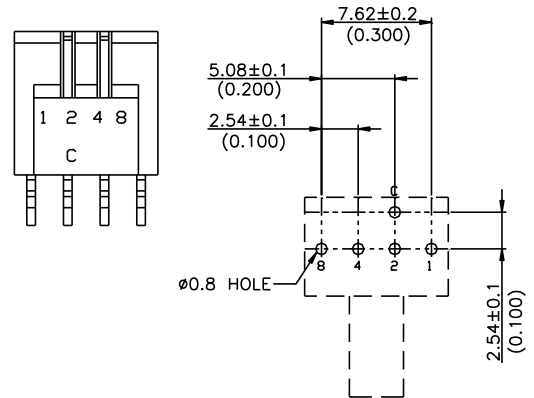
P.C.B. LAYOUT (TOP VIEW)



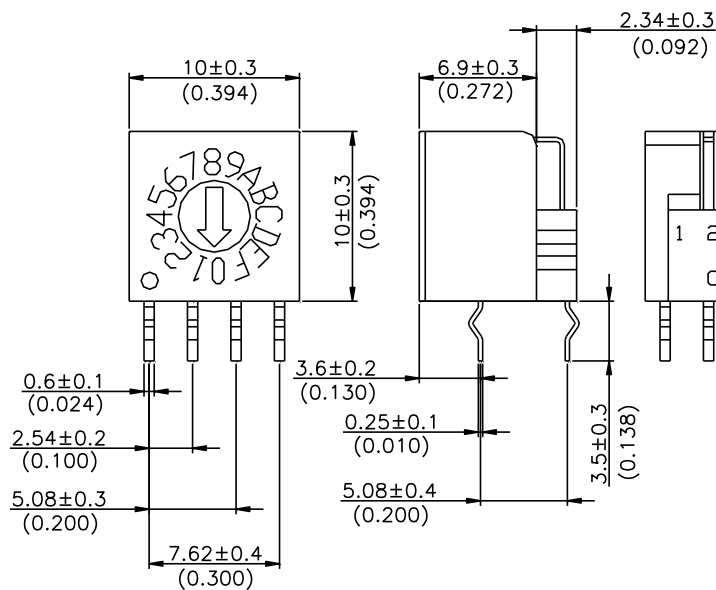
## ERD5XXXR Shaft Type



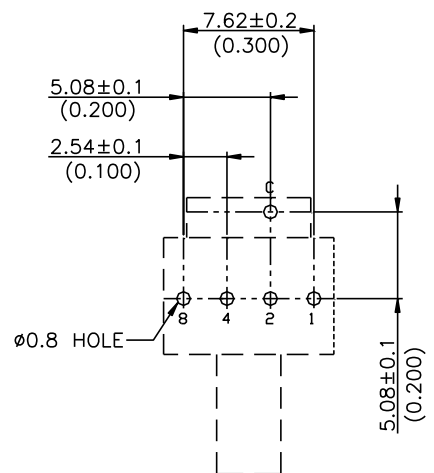
P.C.B. LAYOUT  
(TOP VIEW)



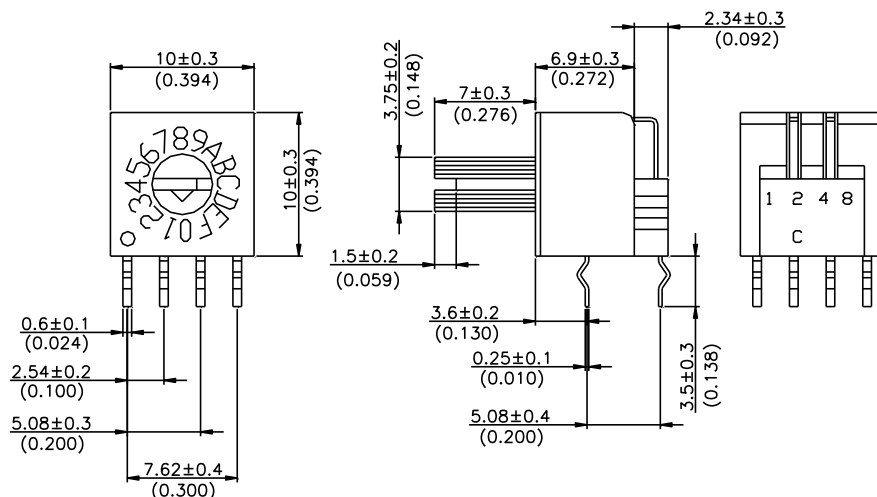
## ERD4XXF Flat Type



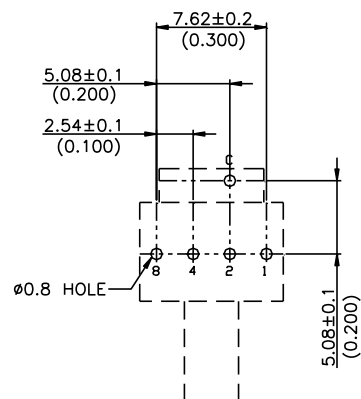
P.C.B. LAYOUT  
(TOP VIEW)



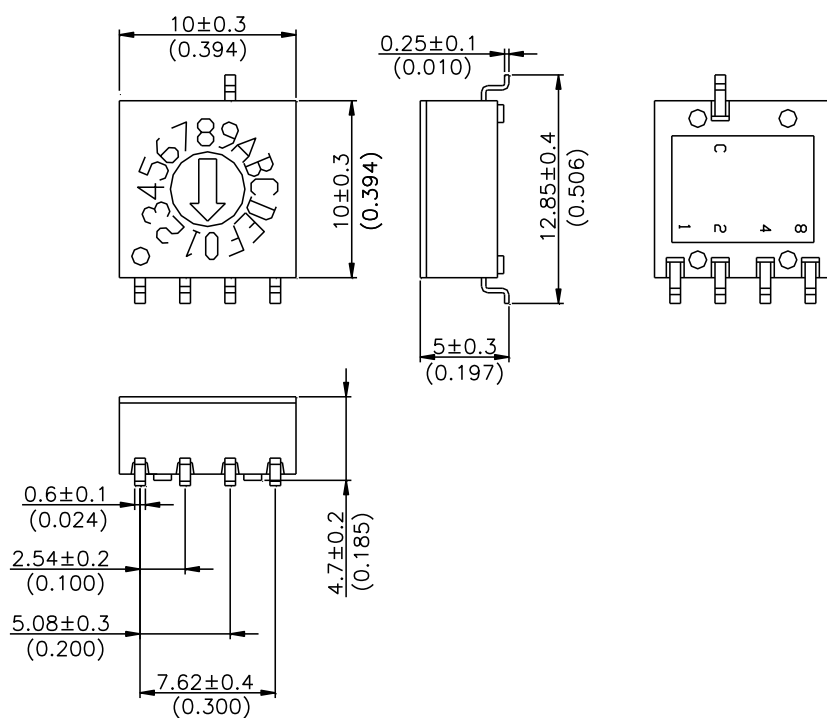
ERD5XXXF Shaft Type



P.C.B. LAYOUT  
(TOP VIEW)



ERD4XXXM Flat Type



P.C.B. LAYOUT  
(TOP VIEW)

